



EDWARD M. BIRN
 Director (Direktot)
 ELIZABETH T. FISHER
 Deputy Director (Sigundo Direktot)

**DEPARTMENT OF
 ADMINISTRATION**
 DIPATTAMENTON ATMENESTRASION
 GENERAL SERVICES AGENCY DIVISION
 (Ahension Setbision Hinirat)
 Telephone (Telifon): (671) 475-1705/1712/1713



LOURDES A. LEON GUERRERO
 Governor (Maga'håga)
 JOSHUA F. TENORIO
 Lt. Governor (Sigundo Maga'låhi)

October 24, 2024

Invitation for Bid
 GSA-031-24

AMENDMENT #6

Removal and Replacement of Chain Link Fence for 29 GDOE Schools

- 1) Amend and replace pages 36 to 70 with attached **“Revised pages 36 to 70”** dated 10/24/2024.

All others remain unchanged.

Andriana Quitugua
 Acting Chief Procurement Officer

Please Print
 Acknowledgement Copy (email to GSA)
 Received By: _____
 Date: _____
 Company Name: _____
 Email to: gsaprocurement@gsadoa.guam.gov

ITEM NO.	DESCRIPTION		QTY./UOM	PRICE PER SQ.FT.	TOTAL COST:
1.0	Removal and Replacement of Chain Link Fence for 29 schools identified by Guam Department of Education (GDOE) as per the following specifications:				
1.1	Agana Heights Elementary School	(Agana Height)	270 LFT.	\$ _____	\$ _____
1.2	C.L. Taitano Elementary School	(Sinajana)	290 LFT.	\$ _____	\$ _____
1.3	Ordot Chalan Pago Elementary School	(Chalan Pago)	2872 LFT.	\$ _____	\$ _____
1.4	HB Price Elementary School	(Mangilao)	770 LFT.	\$ _____	\$ _____
1.5	George Washington High School	(Mangilao)	780 LFT.	\$ _____	\$ _____
1.6	B.P. Carbullido Elementary School	(Barrigada)	1145 LFT.	\$ _____	\$ _____
1.7	Untalan Middle School	(Barrigada)	990 LFT.	\$ _____	\$ _____
1.8	Tiyan High School	(Tiyan)	1680 LFT.	\$ _____	\$ _____
1.9	JQ San Miguel Elementary School	(MTM)	1300 LFT.	\$ _____	\$ _____
1.10	Chief Brodie Elementary School	(Tamuning)	180 LFT.	\$ _____	\$ _____
1.11	LBJ Elementary School	(Tamuning)	720 LFT.	\$ _____	\$ _____
1.12	Astumbo Middle School	(Dededo)	70 LFT.	\$ _____	\$ _____
1.13	Benavente Middle School	(Dededo)	1350 LFT.	\$ _____	\$ _____
1.14	Finegayan Elementary School	(Dededo)	2080 LFT.	\$ _____	\$ _____
1.15	JMG Elementary School	(Dededo)	1790 LFT.	\$ _____	\$ _____
1.16	Liguan Elementary School	(Dededo)	40 LFT.	\$ _____	\$ _____
1.17	Okkodo High School	(Dededo)	340 LFT.	\$ _____	\$ _____
1.18	Wettengel Elementary School	(Dededo)	2300 LFT.	\$ _____	\$ _____
1.19	F.B. Leon Guerrero Middle School	(Yigo)	2700 LFT.	\$ _____	\$ _____
1.20	MACH Elementary School	(Yigo)	960 LFT.	\$ _____	\$ _____
1.21	Simon Sanchez High School	(Yigo)	1400 LFT.	\$ _____	\$ _____
1.22	UPI Elementary School	(Yigo)	580 LFT.	\$ _____	\$ _____
1.23	DL Perez Elementary School	(Yigo)	780 LFT.	\$ _____	\$ _____
1.24	Jose Rios Middle School	(Piti)	900 LFT.	\$ _____	\$ _____
1.25	Southern High School	(Santa Rita)	700 LFT.	\$ _____	\$ _____
1.26	HST Elementary School	(Santa Rita)	620 LFT.	\$ _____	\$ _____
1.27	MAS Elementary School	(Agat)	770 LFT.	\$ _____	\$ _____
1.28	Talofoto Elementary School	(Talofoto)	520 LFT.	\$ _____	\$ _____
1.29	MU Lujan Elementary School	(Yona)	740 LFT.	\$ _____	\$ _____
GRAND TOTAL			29,637 LFT.		

ITEM NO.	DESCRIPTION	QTY./UOM	PRICE PER SQ.FT.	TOTAL COST:
2.0	Removal and Replacement of Chain Link Fence for 22 schools identified by Guam Department of Education (GDOE) as per the following specifications FOR GATES. Sizes vary per school. See below.			
2.1	Agana Heights Elementary School (Agana Height) (2 ea 10'L x 6'H, 1 ea 4'L x 6'H)	24 LFT.	\$ _____	\$ _____
2.2	Ordot Chalan Pago Elementary School (Chalan Pago) (1 ea 15'L x 6'H)	15 LFT.	\$ _____	\$ _____
2.3	HB Price Elementary School (Mangilao) (1 ea 4'L x 6'H)	4 LFT.	\$ _____	\$ _____
2.4	George Washington High School (Mangilao) (2 ea 8'L x 10'H)	16 LFT.	\$ _____	\$ _____
2.5	B.P. Carbullido Elementary School (Barrigada) (2 ea 15'L x 6'H)	30 LFT.	\$ _____	\$ _____
2.6	Untalan Middle School (Barrigada) (2 ea 10'L x 6'H, 2 ea 15'L x 6'H)	50 LFT.	\$ _____	\$ _____
2.7	Tiyan High School (Tiyan) (2 ea 15'L x 6'H, 2 ea 10'L x 6'H)	50 LFT.	\$ _____	\$ _____
<hr/>				
2.8	LBJ Elementary School (Tamuning) (1 ea 10'L x 6'H)	10 LFT.	\$ _____	\$ _____
2.9	Benavente Middle School (Dededo) (4 ea 10'L x 6'H, 3 ea 4'L x 6'H)	52 LFT.	\$ _____	\$ _____
2.10	Finegayan Elementary School (Dededo) (2 ea 15'L x 6'H, 2 ea 10'L x 6'H) (4 ea 4'L x 6'H)	66 LFT.	\$ _____	\$ _____
2.11	JMG Elementary School (Dededo) (2 ea 6'L x 6'H, 6 ea 10'L x 6'H)	12 LFT.	\$ _____	\$ _____
2.12	Wettengel Elementary School (Dededo) (2 ea 6'L x 6'H, 6 ea 10'L x 6'H)	72 LFT.	\$ _____	\$ _____
2.13	F.B. Leon Guerrero Middle School (Yigo) (6 ea 10'L x 6'H)	60 LFT.	\$ _____	\$ _____
2.14	MACH Elementary School (Yigo) (2 ea 15'L x 10'H, 3 ea 4'L x 6'H) (2 ea 4'L x 10'H, 2 ea 6'L x 10'H)	62 LFT.	\$ _____	\$ _____
2.15	Simon Sanchez High School (Yigo) (4 ea 10'L x 6'H)	40 LFT.	\$ _____	\$ _____
2.16	UPI Elementary School (Yigo) (6 ea 10'L x 6'H, 1 ea 5'L x 6'H) (3 ea 15'L x 6'H)	110 LFT.	\$ _____	\$ _____
<hr/>				
2.17	Jose Rios Middle School (Piti) (4 ea 10'L x 10'H)	40 LFT.	\$ _____	\$ _____
2.18	HST Elementary School (Santa Rita) (2 ea 15'L x 6'H, 2 ea 10'L x 6'H)	50 LFT.	\$ _____	\$ _____

Post caps, end caps, and coupling sleeves shall be bounded in place.

Bidder must attach 6-feet in height, 9-gauge galvanized chain-link fencing material to the post and top rail, ensuring it is stretched and secured. Fence shall be able to withstand typhoon force winds.

Bidder is to attach 9-gauge aluminum tie wire from chain link fence to rail.

For 10 and 8 foot fence:

Bidder must install new 3-inch diameter, schedule 60, galvanized fence post at appropriate intervals, ensuring all posts are securely anchored (cemented in the ground) and that fence to the ground gaps are minimized.

Concrete bases shall be sloped to prevent water accumulation.

Bidder must attach 1 ¼ inch diameter top rail to fence post.

Post caps, end caps, and coupling sleeves shall be bounded in place.

Bidder must attach 10-feet in height, 9-gauge galvanized chain-link fencing material to the post and top rail, ensuring it is stretched and secured. Fence shall be able to withstand typhoon force winds.

Bidder is to attach 9-gauge aluminum tie wire from chain link fence to rail.

For 30-foot fence:

Bidder must install new 4-inch diameter, schedule 60, galvanized fence post at appropriate intervals, ensuring all post are securely anchored (cemented in the ground) and that fence to ground gaps are minimized.

Concrete bases shall be sloped to prevent water accumulation.

Post caps, end caps, and coupling sleeves shall be bonded in place.

Bidder must attach 15-feet in height, 9-gauge galvanized chain-link fencing materials to the post and top rail, ensuring it is stretched and secured. Fence shall be able to withstand typhoon force winds.

Bidder is to attach 9-gauge aluminum tie wire from chain link fence to rail.

For Gates (All schools will be equipped with two):

All GDOE schools in this bid will have two (2) or more chain link gates installed on their campus: entrance gates, exit gates, and walker’s gate. The length of each gate varies from school to school. Sizes of these gates can be found on Attachment 1.

Bidder must install new 3-inch diameter, schedule 40, galvanized gate post at appropriate intervals, ensuring that the gate to ground gaps are minimized.

Bidder must attach 1 ½”, schedule 40, galvanized gate frame pipes.

Gate frame pipes are to be attached with 1-7/8” corner sleeves if not welded.

Bidder must install 3-inch diameter frame hinges from gate post to chain link fence.

Bidder is to attach 9-gauge aluminum tire wire from chain link fence to rail.

Bidder must attach 3-inch steel male Bulldog Hinges with U-bolt to all posts ensuring gates open and close freely.

All double gates are to be installed with fork latches that have the padlock accessibility.

Contractor is also to install Cane Bolts or drop rods where necessary.

*Note: The Contractors are encouraged to inspect the fencing project to confirm actual fence/gate lengths, fence/gate heights, and surrounding conditions to ensure accurate quotes are provided.

Quality Assurance and Clean-Up

Bidder must schedule inspection of the installed fences and gates to ensure it is secure and meets all project specifications outline in the Scope of Work.

Clean-up site, removing leftover materials or debris.

Contractor must do walkthrough with GDOE School Administration on completed project, addressing any questions or concerns prior to submitting project invoice for payment to Guam Homeland Security/Office of Civil Defense.

Location

Project for Removal and Replacement of Chain-link fence and gate will be located at 29 GDOE Primary and Secondary Public Schools. Please see Attachment 1.

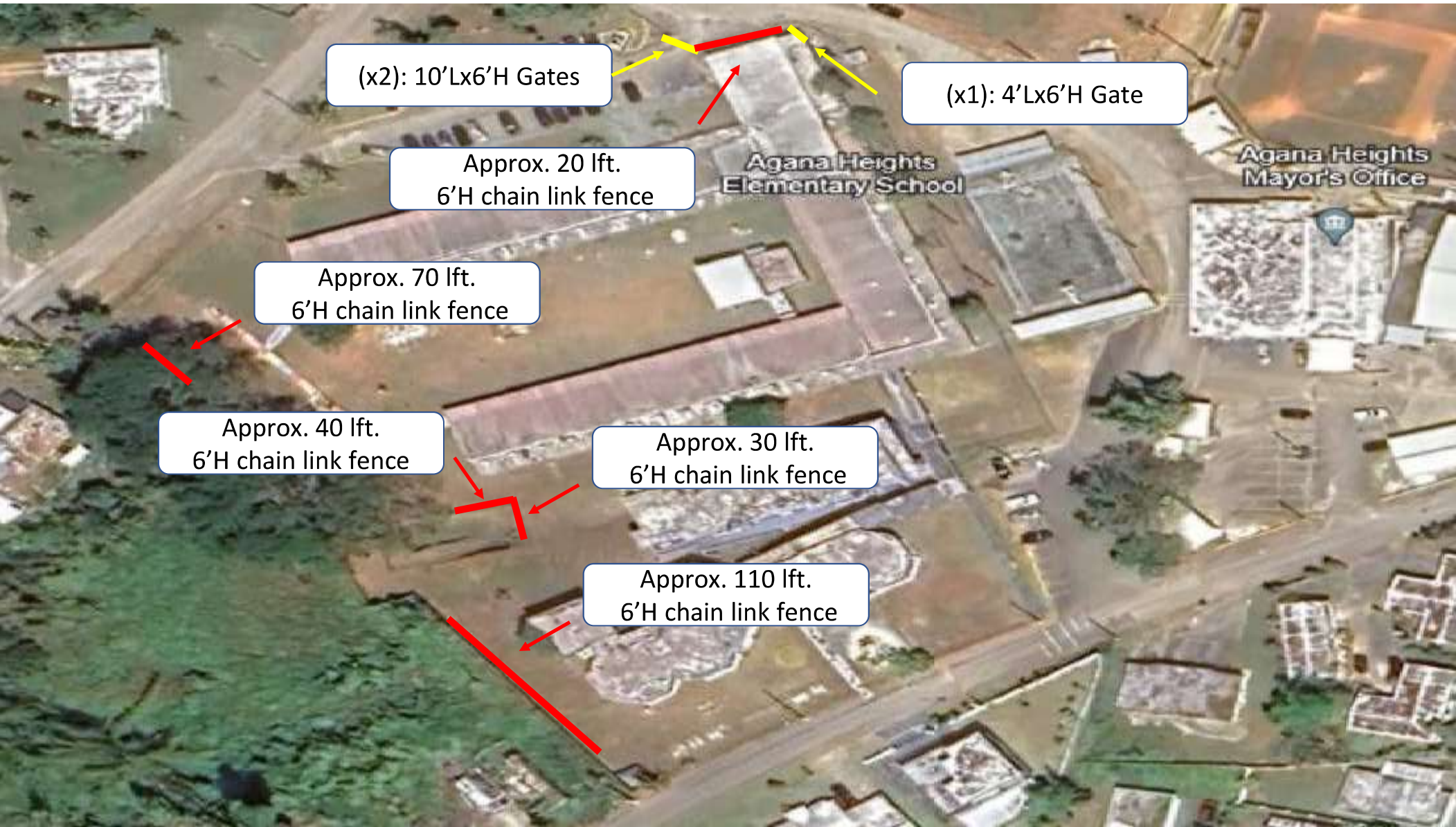
Building Codes

Bidder shall ensure that building meets all current local building codes and statutes, i.e., building, fire, safety OSH, etc.

These specifications have been developed and approved by the staff of Guam Department of Education, prepared by Nikolas Cruz, GDOE Capital Improvement Projects and approved by K. Erik Swanson, PhD, Superintendent of Education.

ATTACHMENT 1

GDOE Fence and Gate Installation Map



(x2): 10'Lx6'H Gates

(x1): 4'Lx6'H Gate

Approx. 20 ft.
6'H chain link fence

Approx. 70 ft.
6'H chain link fence

Approx. 40 ft.
6'H chain link fence

Approx. 30 ft.
6'H chain link fence

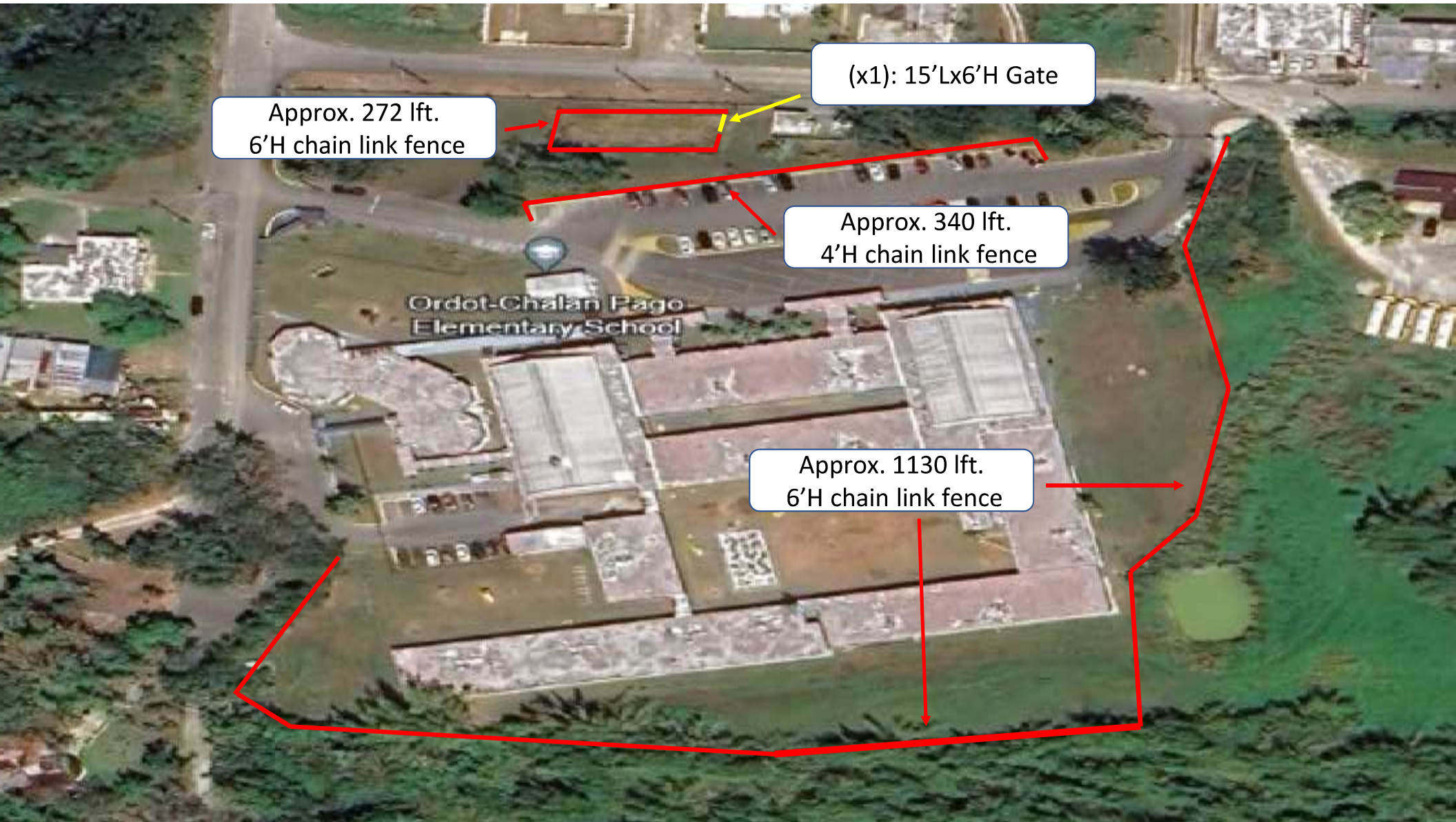
Approx. 110 ft.
6'H chain link fence

* There are no Gates needed for repair or installation

CL Tallero Elementary School

Approx. 130 ft.
6'H chain link fence

Approx. 160 ft.
6'H chain link fence



Approx. 272 ft.
6'H chain link fence

(x1): 15'Lx6'H Gate

Approx. 340 ft.
4'H chain link fence

Approx. 1130 ft.
6'H chain link fence



Approx. 50 ft.
6'H chain link fence

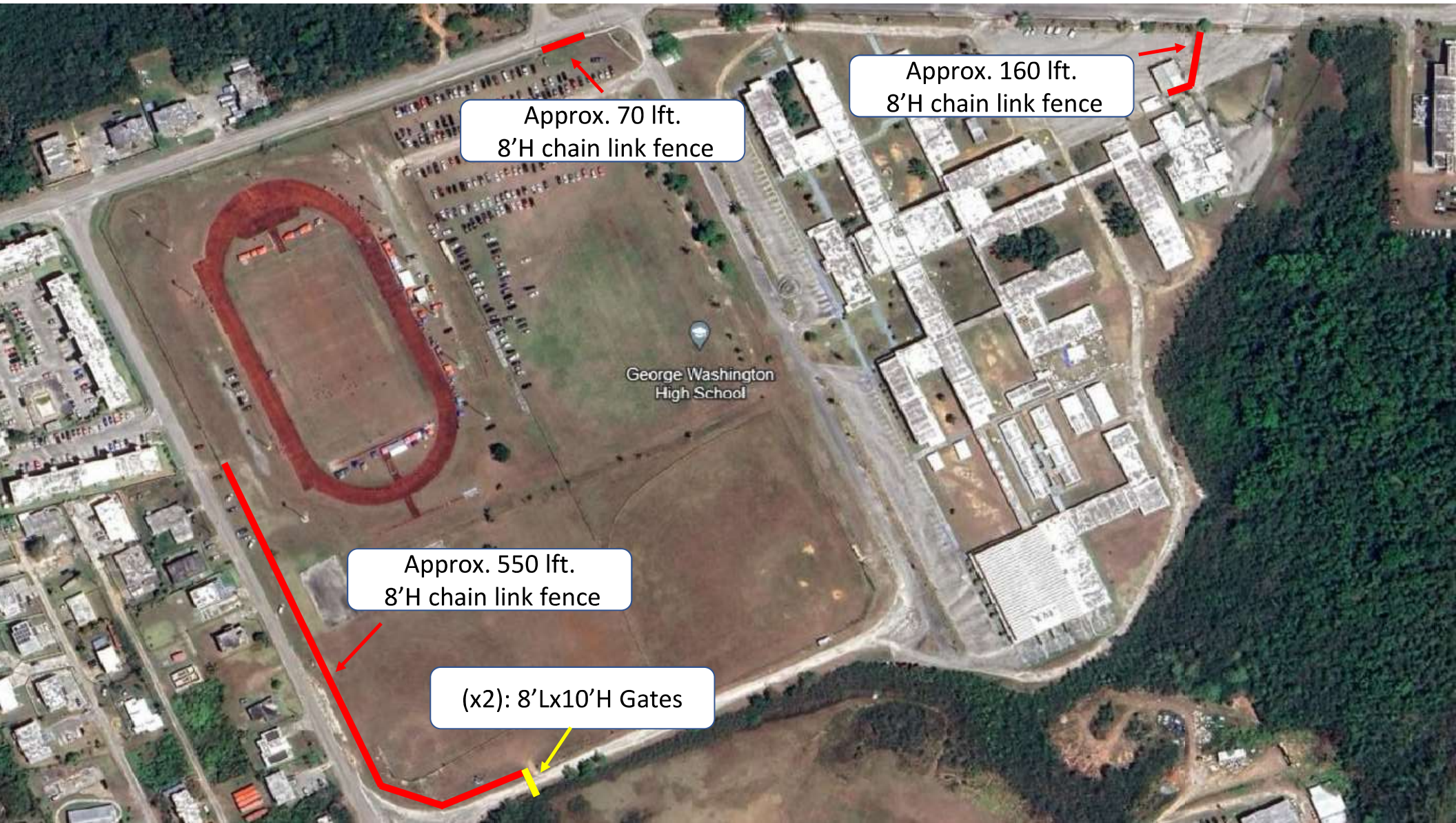
Approx. 70 ft.
6'H chain link fence

(x1): 4'Lx6'H Gate

Approx. 390 ft.
6'H chain link fence

Approx. 200 ft.
6'H chain link fence

Approx. 60 ft.
6'H chain link fence



Approx. 70 ft.
8'H chain link fence

Approx. 160 ft.
8'H chain link fence

Approx. 550 ft.
8'H chain link fence

(x2): 8'Lx10'H Gates



(x2): 15'Lx6'H Gates

Approx. 300 ft.
6'H fence

Approx. 235 ft.
6'H fence

Approx. 270 ft.
6'H fence

Approx. 340 ft.
6'H fence

BP Carbullido Elementary School

Christian Alliance Church



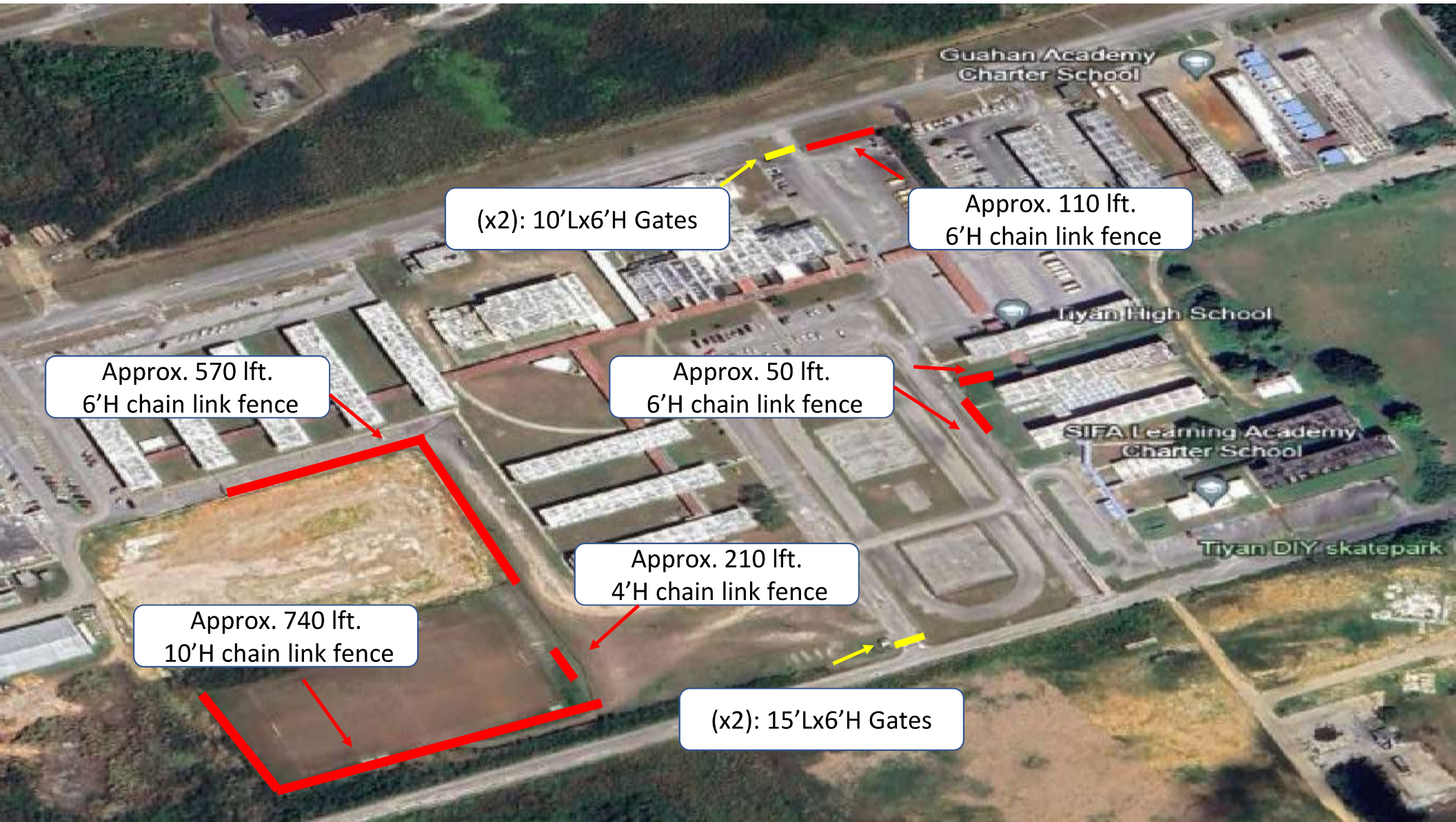
(x2): 15'Lx6'H Gates

Approx. 360 ft.
6'H chain link fence

(x2): 10'Lx6'H Gates

Approx. 410 ft.
6'H chain link fence

Approx. 220 ft.
6'H chain link fence



(x2): 10'Lx6'H Gates

Approx. 110 ft.
6'H chain link fence

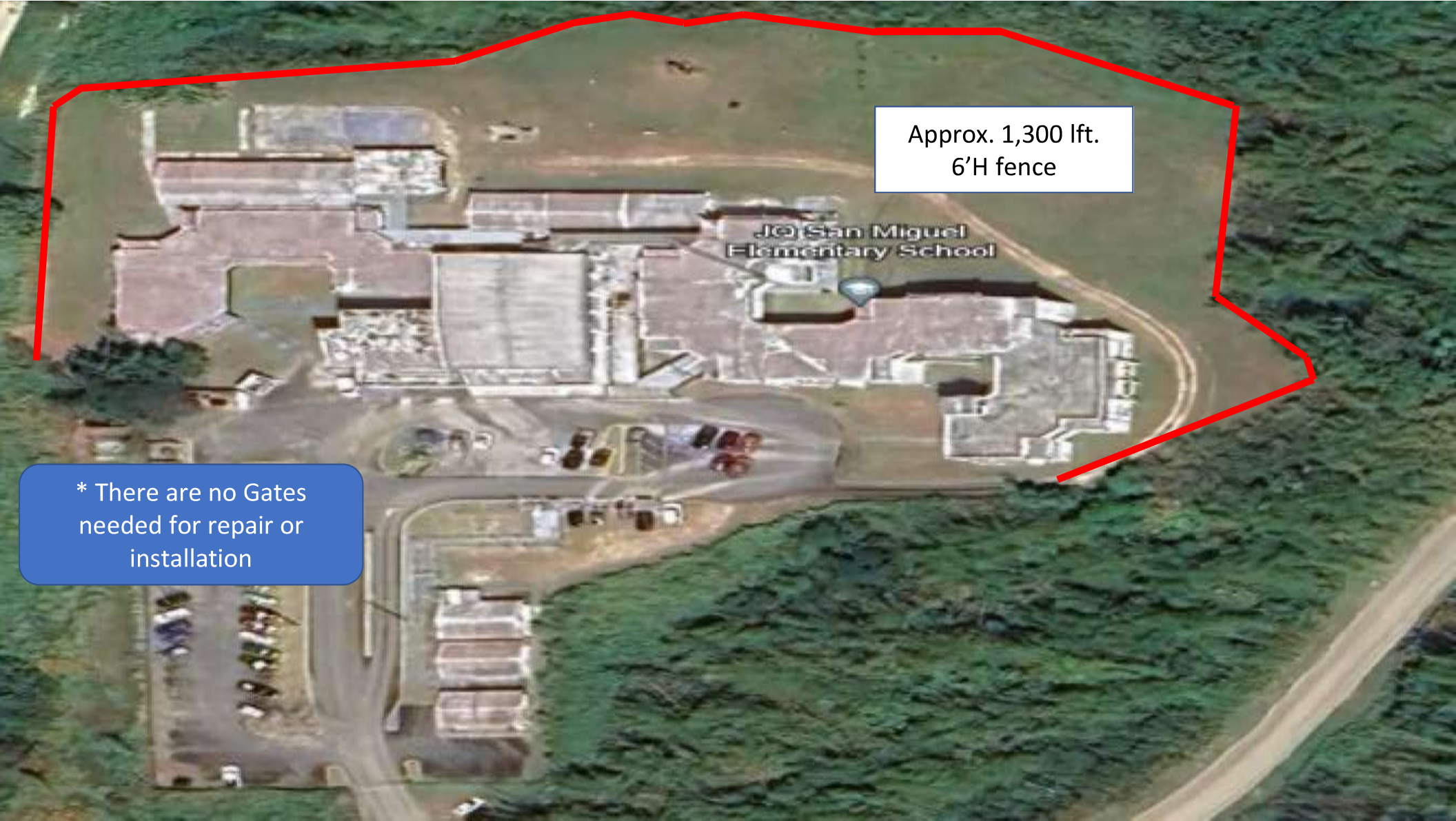
Approx. 570 ft.
6'H chain link fence

Approx. 50 ft.
6'H chain link fence

Approx. 740 ft.
10'H chain link fence

Approx. 210 ft.
4'H chain link fence

(x2): 15'Lx6'H Gates



Approx. 1,300 lft.
6'H fence

* There are no Gates
needed for repair or
installation

* There are no Gates needed for repair or installation

Approx. 180 ft.
6'H chain link fence

Chief Brodie Memorial
Elementary School



Lyndon B. Johnson Elementary

Approx. 150 ft.
6'H chain link fence

(x1): 10'Lx6'H Gates

Approx. 370 ft.
6'H chain link fence

Lyndon B. Johnson Elementary School

Approx. 200 ft.
6'H chain link fence

Skateboard park



* There are no Gates needed for repair or installation

Approx. 70 lft. 6'H chain link fence



(x2): 10'Lx6'H Gates
(1): 4'Lx6'H Gate

Approx. 360 lft.
6'H chain link fence

(x2): 4'Lx6'H Gates

Approx. 120 lft.
6'H chain link fence

Approx. 210 lft.
6'H chain link fence

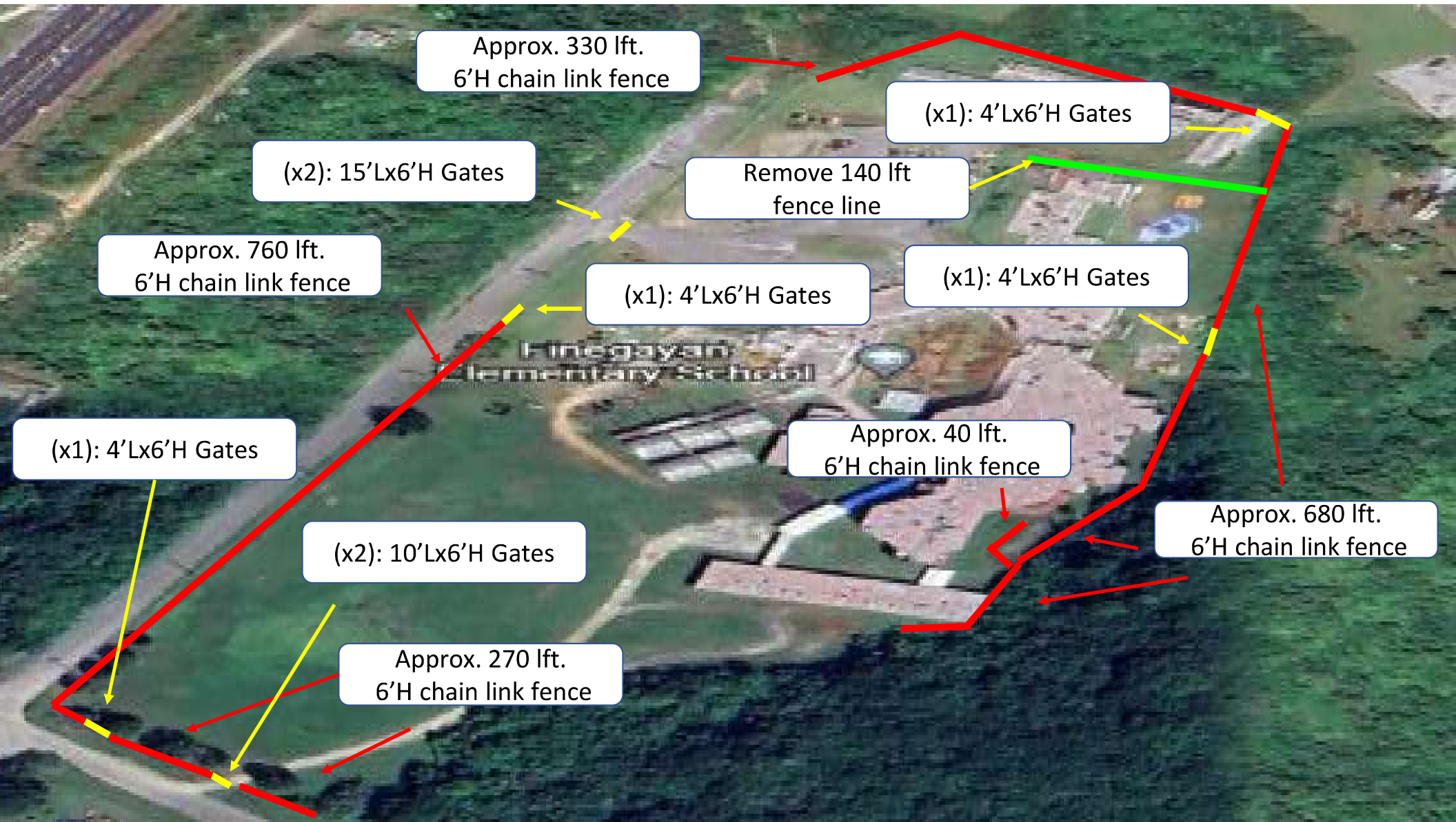
(x2): 10'Lx6'H Gates

Approx. 270 lft.
6'H chain link fence

Approx. 140 lft.
6'H chain link fence

Approx. 250 lft.
6'H chain link fence

V.S.A. Benavente Middle School





Approx. 100 lft.
6'H chain link fence

(x2): 6'Lx6'H Gates

Approx. 1690 lft.
6'H chain link fence

* There are no Gates needed for repair or installation

Approx. 40 ft.
6'H chain link fence

Liguan
Elementary School

* There are no Gates needed for repair or installation

Okkodo High School

Special Olympic event Guam

Approx. 170 ft.
30'H chain link fence

Approx. 170 ft.
30'H chain link fence



(x2): 10'Lx6'H Gates

(x2): 6'Lx6'H Gates

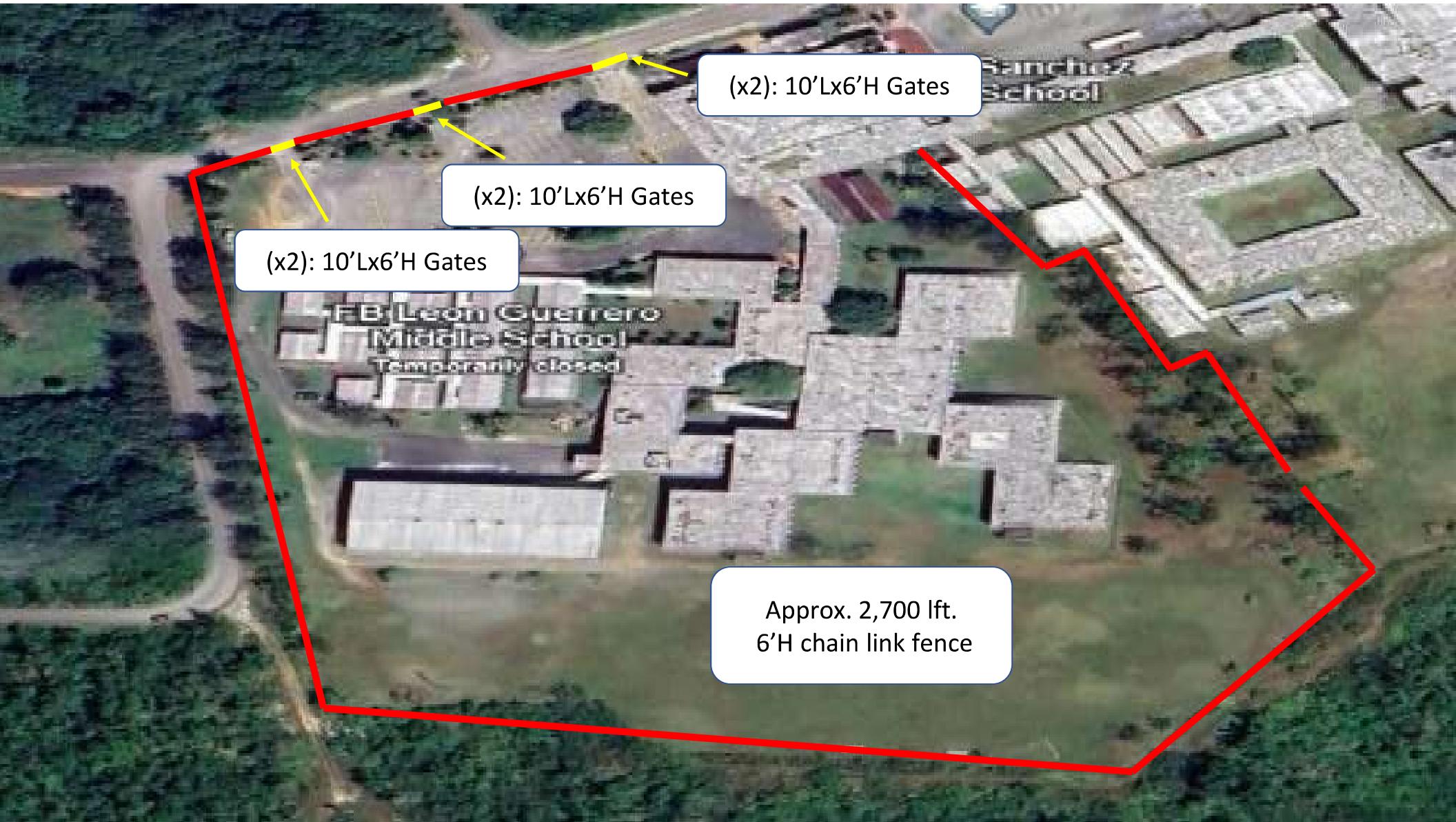
(x2): 10'Lx6'H Gates

(x2): 10'Lx6'H Gates

Approx. 2,300 lft.
6'H chain link fence

Ivan C. Wettengel Elementary School

Wettengel Rugby Field

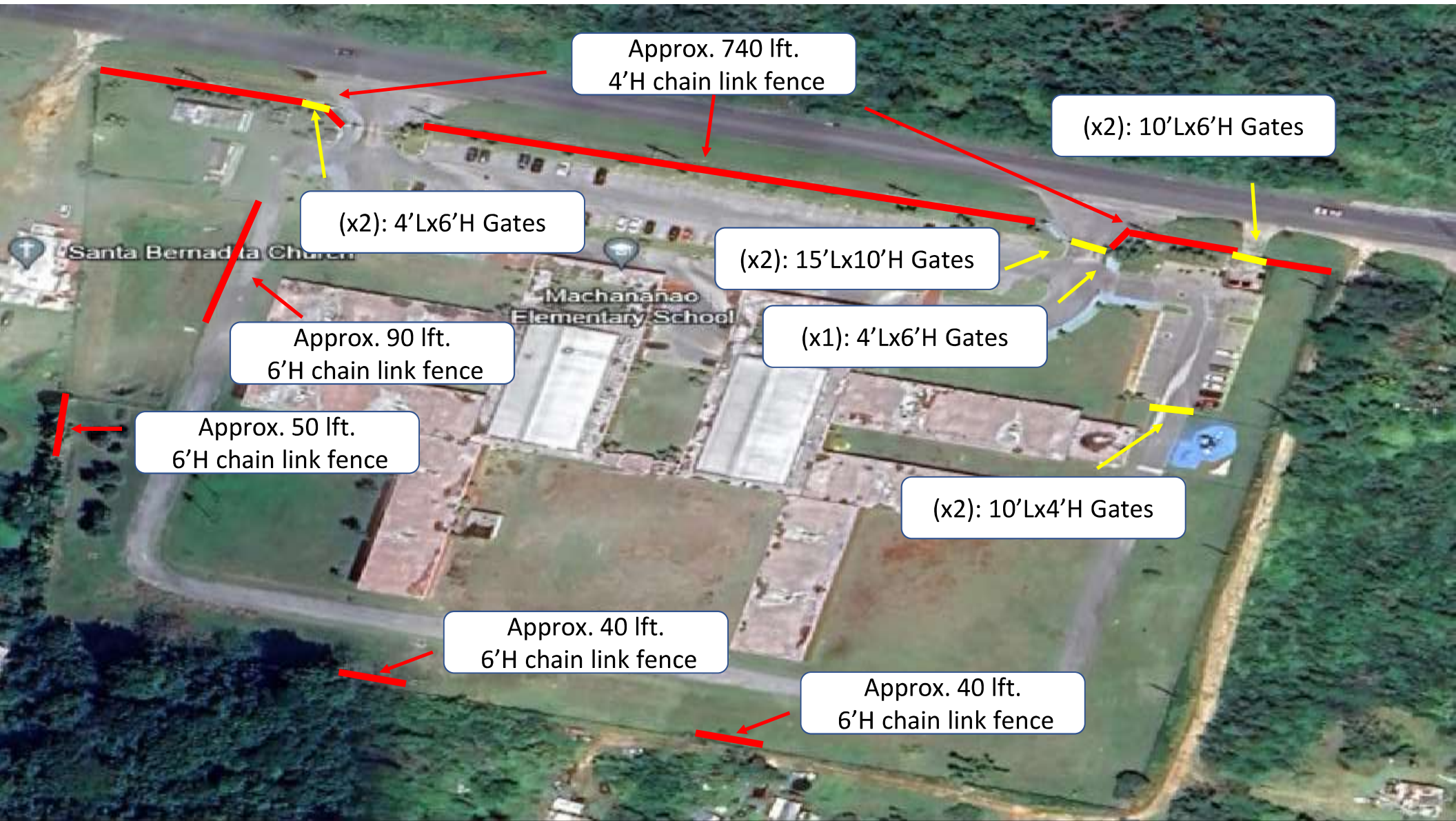


(x2): 10'Lx6'H Gates

(x2): 10'Lx6'H Gates

(x2): 10'Lx6'H Gates

Approx. 2,700 lft.
6'H chain link fence



Approx. 740 ft.
4'H chain link fence

(x2): 10'Lx6'H Gates

(x2): 4'Lx6'H Gates

(x2): 15'Lx10'H Gates

Approx. 90 ft.
6'H chain link fence

(x1): 4'Lx6'H Gates

Approx. 50 ft.
6'H chain link fence

(x2): 10'Lx4'H Gates

Approx. 40 ft.
6'H chain link fence

Approx. 40 ft.
6'H chain link fence



(x2): 10'Lx6'H Gates

(x2): 10'Lx6'H Gates

Approx. 1,400 ft.
6'H chain link fence

Simon Sanchez High School

Kidz Korner



(x2): 15'Lx6'H Gates

Upi Elementary School

Approx. 250 ft.
6'H chain link fence

(x2): 10'Lx6'H Gates

(x2): 10'Lx6'H Gates

Approx. 50 ft.
6'H chain link fence

(x2): 10'Lx6'H Gates

Approx. 280 ft.
6'H chain link fence

(x1): 5'Lx6'H Gates

(x1): 15'Lx6'H Gates

JOSE RIOS MIDDLE SCHOOL

(x2): 10'Lx10'H Gates

(x2): 10'Lx10'H Gates

Approx. 900 lft.
10'H chain link fence

* There are no Gates needed for repair or installation

Approx. 350 ft.
6'H chain link fence

Approx. 130 ft.
6'H chain link fence

Approx. 30 ft.
8'H chain link fence

Approx. 190 ft.
6'H chain link fence

Southern High School

Namo River



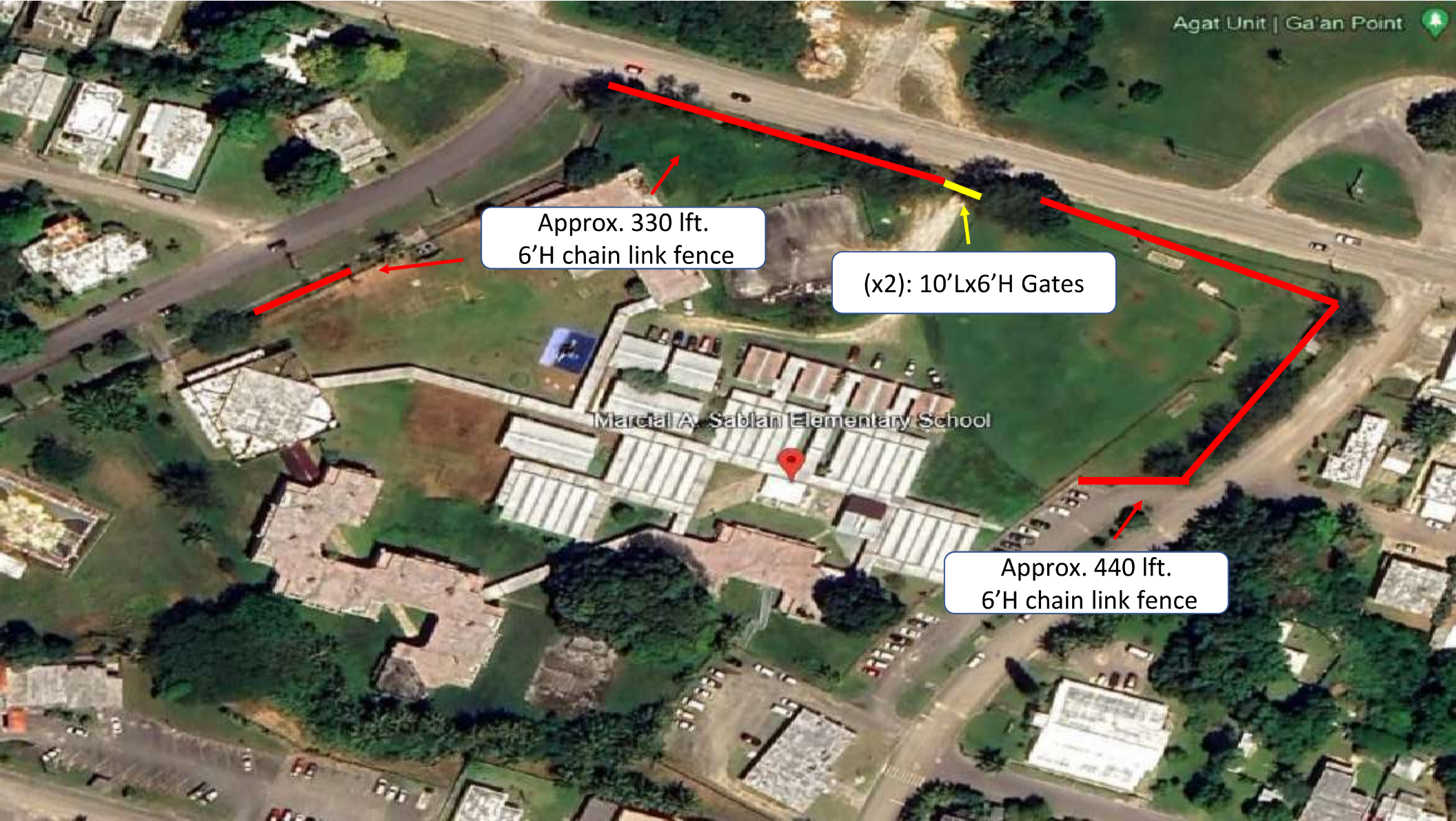
(x2): 15'Lx6'H Gates

Approx. 620 lft.
6'H chain link fence

(x2): 10'Lx6'H Gates

Harry S. Truman
Elementary School

Tamo River



Approx. 330 lft.
6'H chain link fence

(x2): 10'Lx6'H Gates

Approx. 440 lft.
6'H chain link fence



Approx. 330 ft.
8'H chain link fence

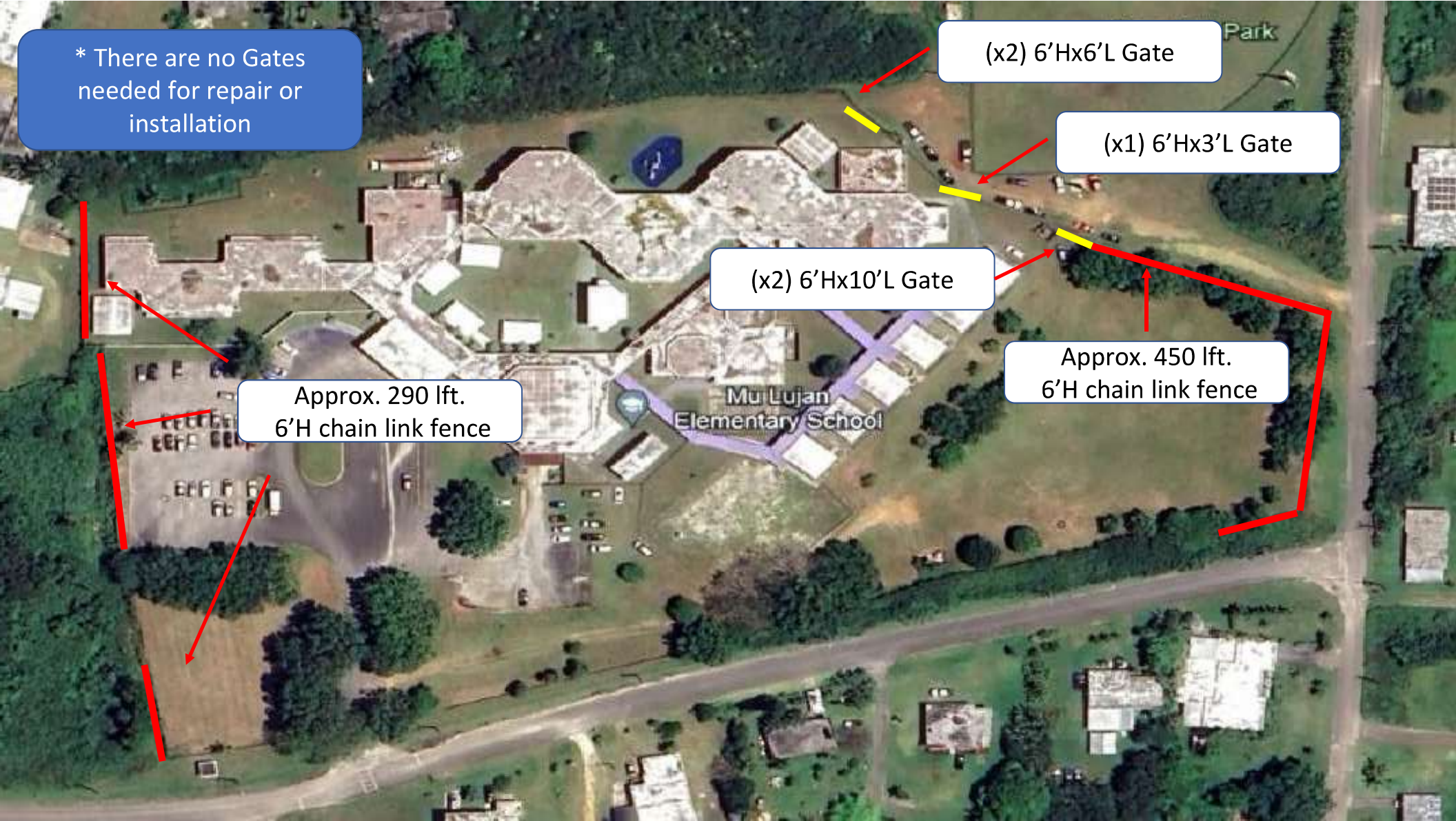
Approx. 120 ft.
8'H chain link fence

Approx. 20 ft.
8'H chain link fence

(x2): 15'Lx8'H Gates

(x2): 15'Lx8'H Gates

Approx. 50 ft.
8'H chain link fence



* There are no Gates needed for repair or installation

(x2) 6'Hx6'L Gate

(x1) 6'Hx3'L Gate

(x2) 6'Hx10'L Gate

Approx. 450 ft. 6'H chain link fence

Approx. 290 ft. 6'H chain link fence



Approx. 230 ft.
6'H chain link fence

(x2): 10'Lx6'H Gates

Approx. 10 ft.
6'H chain link fence

Approx. 200 ft.
6'H chain link fence

(x2): 15'Lx6'H Gates

(x2): 15'Lx6'H Gates

Approx. 340 ft.
6'H chain link fence

south lakpe