



EDWARD M. BIRN  
Director (Direktot)  
RENA K. BORJA  
Deputy Director (Sigundo Direktot)

**DEPARTMENT OF  
ADMINISTRATION**  
DIPATTAMENTON ATMENESTRASION  
**GENERAL SERVICES AGENCY**  
*(Ahension Setbision Hinirat)*  
Telephone (Telifon): (671) 475-1705/1706



LOURDES A. LEON GUERRERO  
Governor (Maga'håga)  
JOSHUA F. TENORIO  
Lt. Governor (Sigundo Maga'låhi)

September 18, 2025

Invitation for Bid  
GSA-078-25

**AMENDMENT #4**

Removal and Replacement of Chain Link Fence for 29 GDOE Schools

- 1) Amend page 2 of 76 and page 3 of 76.

**From:**

**Bid Opening:** This bid shall be submitted in duplicate and sealed to the issuing office above no later than **Time: 10:00am, Date: 9/22/2025** and shall be publicly opened. Bid submitted after the time and date specified above shall be rejected. See attached General Terms and Conditions and Sealed Bid Solicitation for details.

**To now read:**

**Bid Opening:** This bid shall be submitted in duplicate and sealed to the issuing office above no later than **Time: 1:30pm, Date: 9/26/2025** and shall be publicly opened. Bid submitted after the time and date specified above shall be rejected. See attached General Terms and Conditions and Sealed Bid Solicitation for details.

- 2) Amend and replace pages 42 to 76 of 76 with attached "**Revised Pages 42 to 76 of 76**" dated 9/18/2025.

All others remain unchanged.

Andriana Quitugua  
Acting Chief Procurement Officer

Please Print  
**ACKNOWLEDGMENT COPY**  
Received By: \_\_\_\_\_  
Date: \_\_\_\_\_  
Company/Name: \_\_\_\_\_  
Email To: [gsaprocurement@gsadoa.guam.gov](mailto:gsaprocurement@gsadoa.guam.gov)

ITEM NO.	DESCRIPTION		QTY/UOM	PRICE PER SQ.FT.	TOTAL COST:
1.0	Removal and Replacement of <b>Chain Link Fence</b> for <b>28 schools identified</b> by Guam Department of Education (GDOE) as per the following specifications:				
1.1	Agana Heights Elementary School	(Agana Height)	270 LFT.	\$_____	\$_____
1.2	C.L. Taitano Elementary School	(Sinajana)	290 LFT.	\$_____	\$_____
1.3	Ordot Chalan Pago Elementary School	(Chalan Pago)	612 LFT.	\$_____	\$_____
1.4	HB Price Elementary School	(Mangilao)	955 LFT.	\$_____	\$_____
1.5	George Washington High School	(Mangilao)	946 LFT.	\$_____	\$_____
1.6	B.P. Carbullido Elementary School	(Barrigada)	1145 LFT.	\$_____	\$_____
1.7	Untalan Middle School	(Barrigada)	990 LFT.	\$_____	\$_____
1.8	Tiyan High School	(Tiyan)	1680 LFT.	\$_____	\$_____
1.9	JQ San Miguel Elementary School	(MTM)	1300 LFT.	\$_____	\$_____
1.10	Chief Brodie Elementary School	(Tamuning)	180 LFT.	\$_____	\$_____
1.11	LBJ Elementary School	(Tamuning)	720 LFT.	\$_____	\$_____
1.12	Astumbo Middle School	(Dededo)	70 LFT.	\$_____	\$_____
1.13	Benavente Middle School	(Dededo)	1353 LFT.	\$_____	\$_____
1.14	Finegayan Elementary School	(Dededo)	2165 LFT.	\$_____	\$_____
1.15	JMG Elementary School	(Dededo)	1539 LFT.	\$_____	\$_____
1.16	Liguan Elementary School	(Dededo)	40 LFT.	\$_____	\$_____
1.17	Okkodo High School	(Dededo)	340 LFT.	\$_____	\$_____
1.18	Wettengel Elementary School	(Dededo)	2300 LFT.	\$_____	\$_____
1.19	F.B. Leon Guerrero Middle School	(Yigo)	2700 LFT.	\$_____	\$_____
1.20	MACH Elementary School	(Yigo)	963 LFT.	\$_____	\$_____
1.21	UPI Elementary School	(Yigo)	573 LFT.	\$_____	\$_____
1.22	DL Perez Elementary School	(Yigo)	928 LFT.	\$_____	\$_____
1.23	Jose Rios Middle School	(Piti)	360 LFT.	\$_____	\$_____
1.24	Southern High School	(Santa Rita)	700 LFT.	\$_____	\$_____
1.25	HST Elementary School	(Santa Rita)	620 LFT.	\$_____	\$_____
1.26	MAS Elementary School	(Agat)	790 LFT.	\$_____	\$_____
1.27	Talofofo Elementary School	(Talofofo)	520 LFT.	\$_____	\$_____
1.28	MU Lujan Elementary School	(Yona)	740 LFT.	\$_____	\$_____
<b>GRAND TOTAL</b>			<b>25,789 LFT.</b>		

ITEM NO.	DESCRIPTION		QTY./UOM	PRICE PER SQ.FT.	TOTAL COST:
2.0	Removal and Replacement of Chain Link Fence for <b>21 schools identified</b> by Guam Department of Education (GDOE) as per the following <b>specifications FOR GATES. Sizes vary per school.</b> See below.				
2.1	Agana Heights Elementary School (2 ea 10'L x 6'H, 1 ea 4'L x 6'H)	(Agana Height)	24 LFT.	\$_____	\$_____
2.2	Ordot Chalan Pago Elementary School (1 ea 15'L x 6'H)	(Chalan Pago)	15 LFT.	\$_____	\$_____
2.3	HB Price Elementary School (1 ea 4'L x 6'H)	(Mangilao)	4 LFT.	\$_____	\$_____
2.4	George Washington High School (2 ea 10'L x 8'H)	(Mangilao)	20 LFT.	\$_____	\$_____
2.5	B.P. Carbullido Elementary School (2 ea 15'L x 6'H)	(Barrigada)	30 LFT.	\$_____	\$_____
2.6	Untalan Middle School (2 ea 10'L x 6'H, 2 ea 15'L x 6'H)	(Barrigada)	50 LFT.	\$_____	\$_____
2.7	Tiyan High School (2 ea 15'L x 6'H, 2 ea 10'L x 6'H)	(Tiyan)	50 LFT.	\$_____	\$_____
2.8	LBJ Elementary School (1 ea 10'L x 6'H)	(Tamuning)	10 LFT.	\$_____	\$_____
2.9	Benavente Middle School (2 ea 7'L x 6'H) ( 2 ea 10'Lx6'H) ( 2 ea 4'L x 6'H)	(Dededo)	42 LFT.	\$_____	\$_____
2.10	Finegayan Elementary School (2 ea 15'L x 6'H, 2 ea 10'L x 6'H) (4 ea 4'L x 6'H)	(Dededo)	66 LFT.	\$_____	\$_____
2.11	JMG Elementary School (2 ea 6'L x 6'H)	(Dededo)	12 LFT.	\$_____	\$_____
2.12	Wettengel Elementary School (2 ea 6'L x 6'H, 6 ea 10'L x 6'H)	(Dededo)	72 LFT.	\$_____	\$_____
2.13	F.B. Leon Guerrero Middle School (6 ea 10'L x 6'H)	(Yigo)	60 LFT.	\$_____	\$_____
2.14	MACH Elementary School (2 ea 15'L x 10'H, 3 ea 4'L x 6'H) (2 ea 8'L x 6'H)	(Yigo)	58 LFT.	\$_____	\$_____
2.15	UPI Elementary School (4 ea 10'L x 6'H, 1 ea 5'L x 6'H) (3 ea 15'L x 6'H)	(Yigo)	90 LFT.	\$_____	\$_____
2.16	Jose Rios Middle School (2 ea 10'L x 8'H) (2 ea 13'L x 8'H)	(Piti)	46 LFT.	\$_____	\$_____
2.17	HST Elementary School (2 ea 10'L x 6'H, 2 ea 10'L x 6'H)	(Santa Rita)	40 LFT.	\$_____	\$_____
2.18	MAS Elementary School (2 ea 7.5'L x 6'H)	(Agat)	15 LFT.	\$_____	\$_____

2.19	Talofofo Elementary School (2 ea 13'L x 8'H) (2 ea 12'L x 8'H)	(Talofofo)	50 LFT.	\$_____	\$_____
2.20	DL Perez Elementary School (4 ea 10'L x 6'H) (2 ea 11'L x 6'H)	(Dededo)	62 LFT.	\$_____	\$_____
2.21	MU Lujan Elementary School (2 ea 6'L x 6'H, 1 ea 4'L x 6'H) (2 ea 12'L x 6'H)	(Yona)	40 LFT.	\$_____	\$_____

GRAND TOTAL

856 LFT.

**GENERAL:** Guam Department of Education (GDOE) through the support of Guam Homeland Security/Office of Civil Defense (GHS/OCD) intend to solicit contractual services from licensed and qualified companies for the Removal and Replacement of Fence Lines and Gates for Primary and Secondary schools that sustained damages from Typhoon Mawar. This project is necessary for school officials to maintain the safety of the students, operational control at the campus, and the security of GDOE school properties.

<b>SPECIFICATIONS:</b> Bidder shall provide all supervision of labor, materials, and equipment necessary to remove and install the fencing as specified herein.	<b>BIDDING ON / REMARKS:</b>
<b>Site Assessment and Preparation</b> Bidder must evaluate the existing fencing condition and layout.	
Bidder must identify any obstacles or challenges such as that may delay or affect the replacement of the fence line (verify that property margins where fence line is being replace is within the boundaries of the schools).	
Bidders fence installation shall not pool water any more than prior conditions.	
Bidder must prepare the site by clearing any debris or vegetation around the project area.	
<b>Removal of Existing Fence and Gate</b> Bidder must carefully remove the existing fence and concrete bases, including post and top rails, ensuring minimal damage to surrounding areas.	
Bidder must dispose of or recycle the old fencing materials as per local regulations.	

**Material and Installation of New Fence and Gate**  
The approximate length and height of each fence can be found in Attachment 1. The specifications below are to be applied to all fences depending on height. All fences should be installed level to the ground. The Contractor is responsible to clear and dispose of any debris such as trees, brushes, etc. as part of the site preparation to install fences.

<u>For 6-foot fence:</u> Bidder must install new 2-inch diameter, schedule 40, galvanized fence posts at appropriate intervals, ensuring all post are securely anchored (cemented in the ground) and that fence to ground gaps are minimized.	
Concrete bases shall be sloped to prevent water accumulation.	
Bidder must attach 1 ¼ inch diameter top rail to fence post.	



Post caps, end caps, and coupling sleeves shall be bounded in place.

---

Bidder must attach 6-feet in height, 9-gauge galvanized chain-link fencing material to the post and top rail, ensuring it is stretched and secured. Fence shall be able to withstand typhoon force winds.

---

Bidder is to attach 9-gauge aluminum tie wire from chain link fence to rail.

---

For 10 and 8 foot fence:  
Bidder must install new 3-inch diameter, schedule 60, galvanized fence post at appropriate intervals, ensuring all posts are securely anchored (cemented in the ground) and that fence to the ground gaps are minimized.

---

Concrete bases shall be sloped to prevent water accumulation.

---

Bidder must attach 1 ¼ inch diameter top rail to fence post.

---

Post caps, end caps, and coupling sleeves shall be bounded in place.

---

Bidder must attach 10-feet in height, 9-gauge galvanized chain-link fencing material to the post and top rail, ensuring it is stretched and secured. Fence shall be able to withstand typhoon force winds.

---

Bidder is to attach 9-gauge aluminum tie wire from chain link fence to rail.

---

For 30-foot fence:  
Bidder must install new 4-inch diameter, schedule 60, galvanized fence post at appropriate intervals, ensuring all post are securely anchored (cemented in the ground) and that fence to ground gaps are minimized.

---

Concrete bases shall be sloped to prevent water accumulation.

---

Post caps, end caps, and coupling sleeves shall be bonded in place.

---

Bidder must attach 15-feet in height, 9-gauge galvanized chain-link fencing materials to the post and top rail, ensuring it is stretched and secured. Fence shall be able to withstand typhoon force winds.

---

Bidder is to attach 9-gauge aluminum tie wire from chain link fence to rail.

---

**For Gates (All schools will be equipped with two):**  
**All GDOE schools in this bid will have two (2) or more chain link gates installed on their campus: entrance gates, exit gates, and walker’s gate. The length of each gate varies from school to school. Sizes of these gates can be found on Attachment 1.**

Bidder must install new 3-inch diameter, schedule 40, galvanized gate post at appropriate intervals, ensuring that the gate to ground gaps are minimized.

---

Bidder must attach 1 ½”, schedule 40, galvanized gate frame pipes.

---

Gate frame pipes are to be attached with 1-7/8” corner sleeves if not welded.

---

Bidder must install 3-inch diameter frame hinges from gate post to chain link fence.

---

Bidder is to attach 9-gauge aluminum tire wire from chain link fence to rail.

---

Bidder must attach 3-inch steel male Bulldog Hinges with U-bolt to all posts ensuring gates open and close freely.

---

All double gates are to be installed with fork latches that have the padlock accessibility.

---

Contractor is also to install Cane Bolts or drop rods where necessary.

---

\*Note: The Contractors are encouraged to inspect the fencing project to confirm actual fence/gate lengths, fence/gate heights, and surrounding conditions to ensure accurate quotes are provided.

**Quality Assurance and Clean-Up**

Bidder must schedule inspection of the installed fences and gates to ensure it is secure and meets all project specifications outline in the Scope of Work.

---

Clean-up site, removing leftover materials or debris.

---

Contractor must do walkthrough with GDOE School Administration on completed project, addressing any questions or concerns prior to submitting project invoice for payment to Guam Homeland Security/Office of Civil Defense.

---

**Location**

Project for Removal and Replacement of Chain-link fence and gate will be located at 29 GDOE Primary and Secondary Public Schools. Please see Attachment 1.

---

**Building Codes**

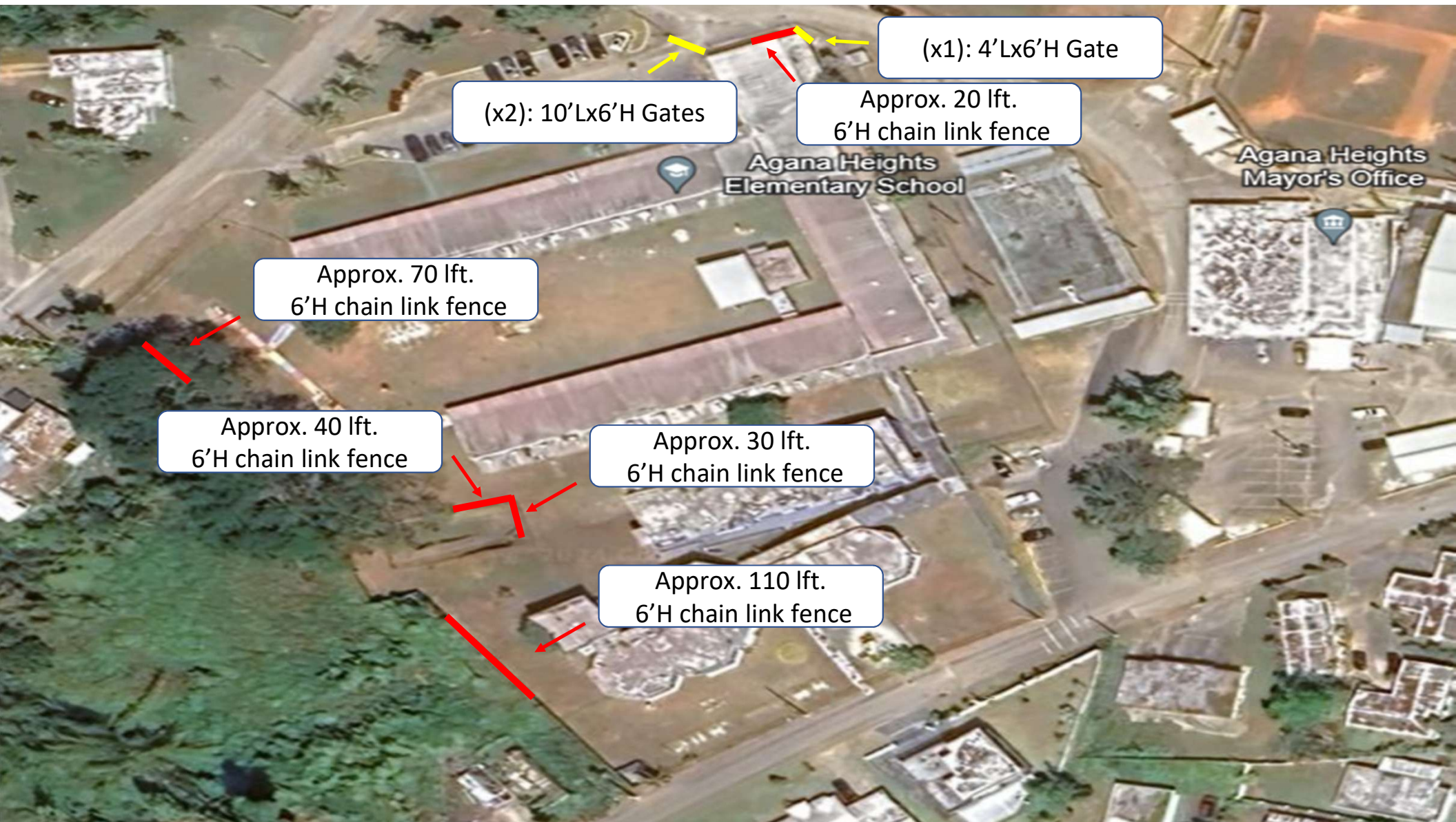
Bidder shall ensure that building meets all current local building codes and statutes, i.e., building, fire, safety OSH, etc.

---

These specifications have been developed and approved by the staff of Guam Department of Education, prepared by Nikolas Cruz, GDOE Capital Improvement Projects and approved by K. Erik Swanson, PhD, Superintendent of Education.

# **ATTACHMENT 1**

## **GDOE Fence and Gate Installation Map**



(x1): 4'Lx6'H Gate

(x2): 10'Lx6'H Gates

Approx. 20 lft.  
6'H chain link fence

Approx. 70 lft.  
6'H chain link fence

Approx. 40 lft.  
6'H chain link fence

Approx. 30 lft.  
6'H chain link fence

Approx. 110 lft.  
6'H chain link fence



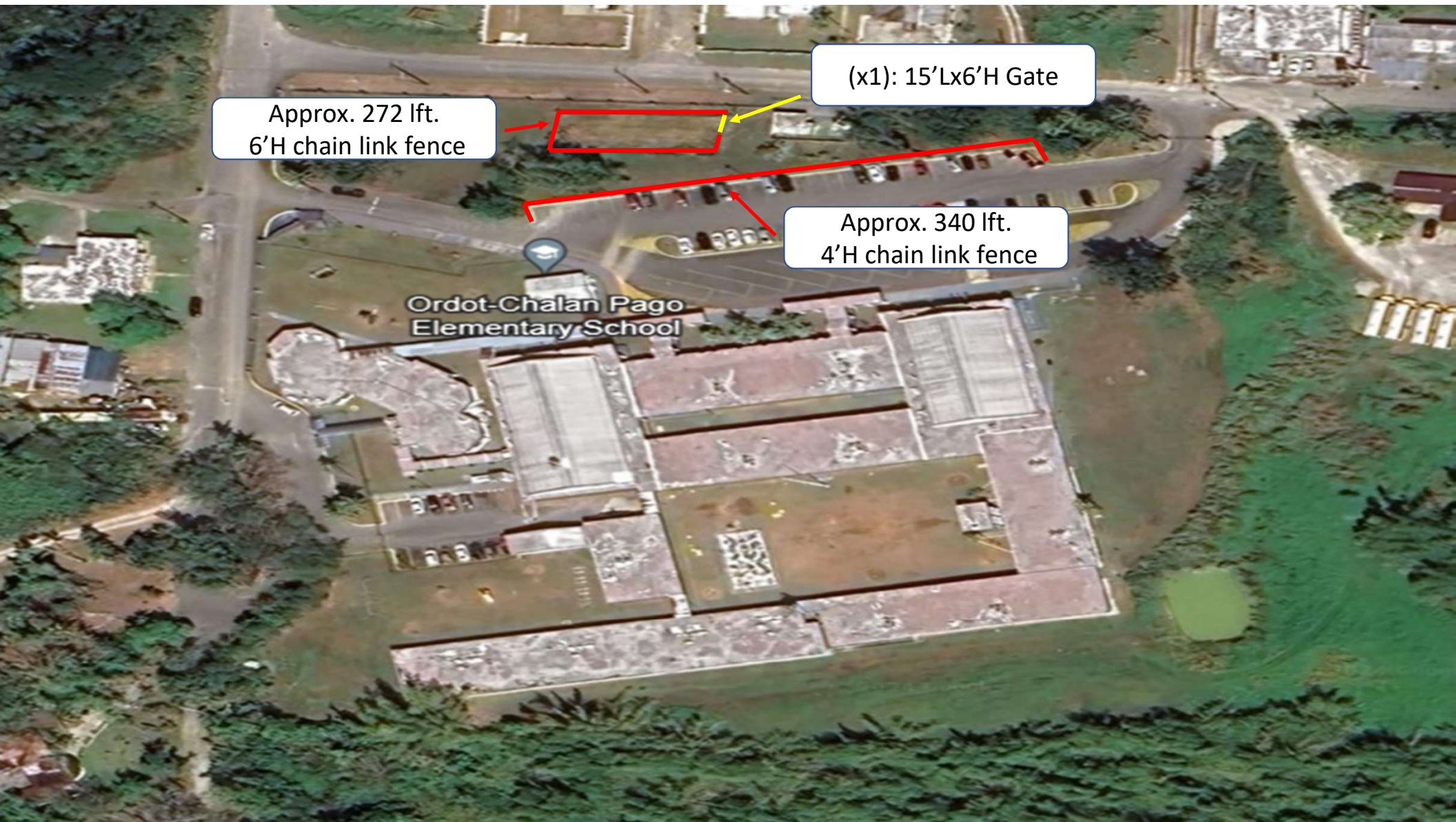
\* There are no Gates needed for repair or installation

CL Taitano  
Elementary School

Approx. 130 lft.  
6'H chain link fence

Approx. 160 lft.  
6'H chain link fence





Approx. 272 lft.  
6'H chain link fence

(x1): 15'Lx6'H Gate

Approx. 340 lft.  
4'H chain link fence

Ordot-Chalan Pago  
Elementary School





Approx. 50 lft.  
6'H chain link fence

Approx. 70 lft.  
6'H chain link fence

(x1): 4'Lx6'H Gate

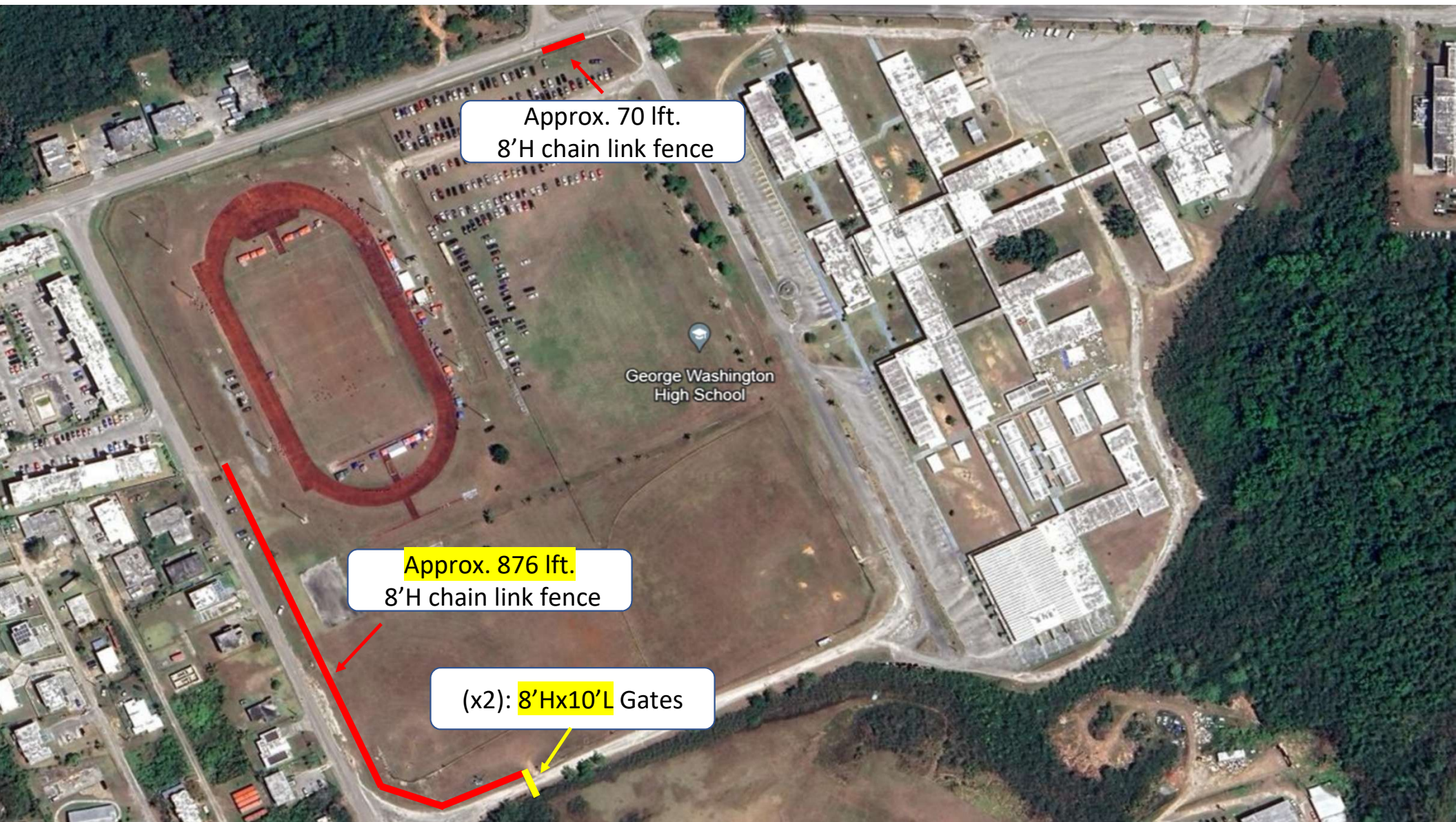
Approx. 390 lft.  
6'H chain link fence

Approx. 185 lft.  
6'H chain link fence

Approx. 200 lft.  
6'H chain link fence

Approx. 60 lft.  
6'H chain link fence



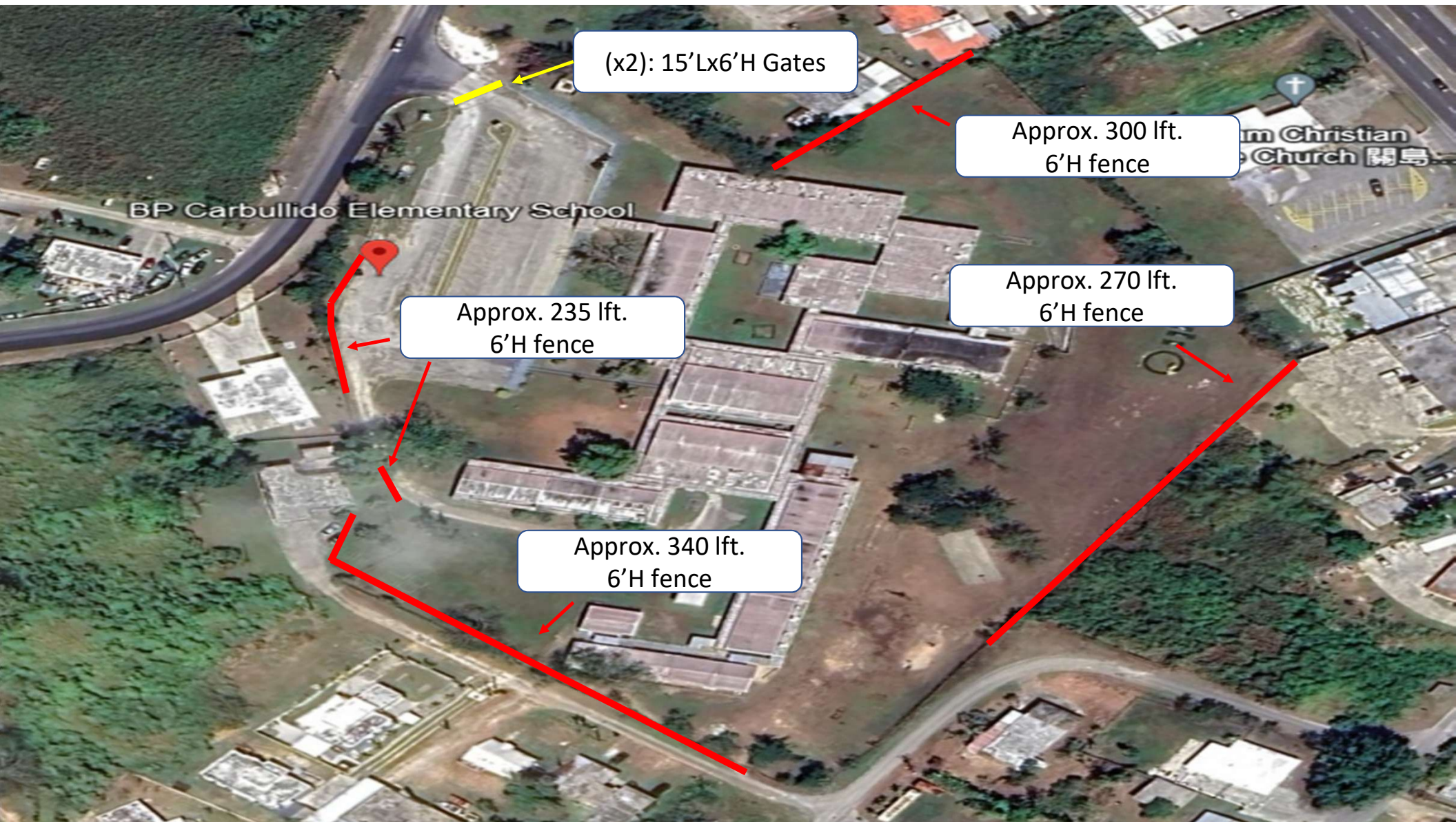


Approx. 70 ft.  
8'H chain link fence

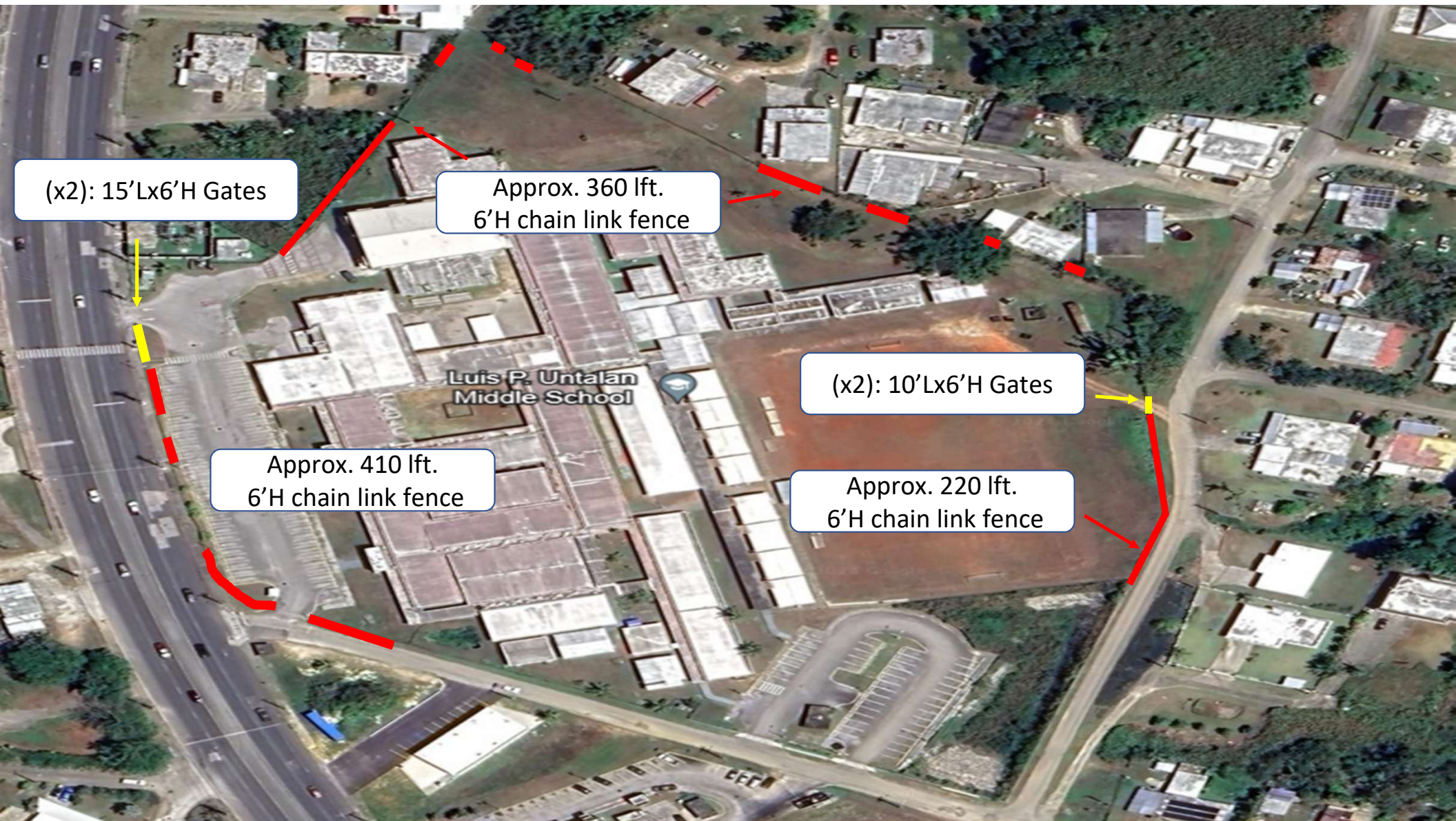
Approx. 876 ft.  
8'H chain link fence

(x2): 8'Hx10'L Gates









(x2): 15'Lx6'H Gates

Approx. 360 lft.  
6'H chain link fence

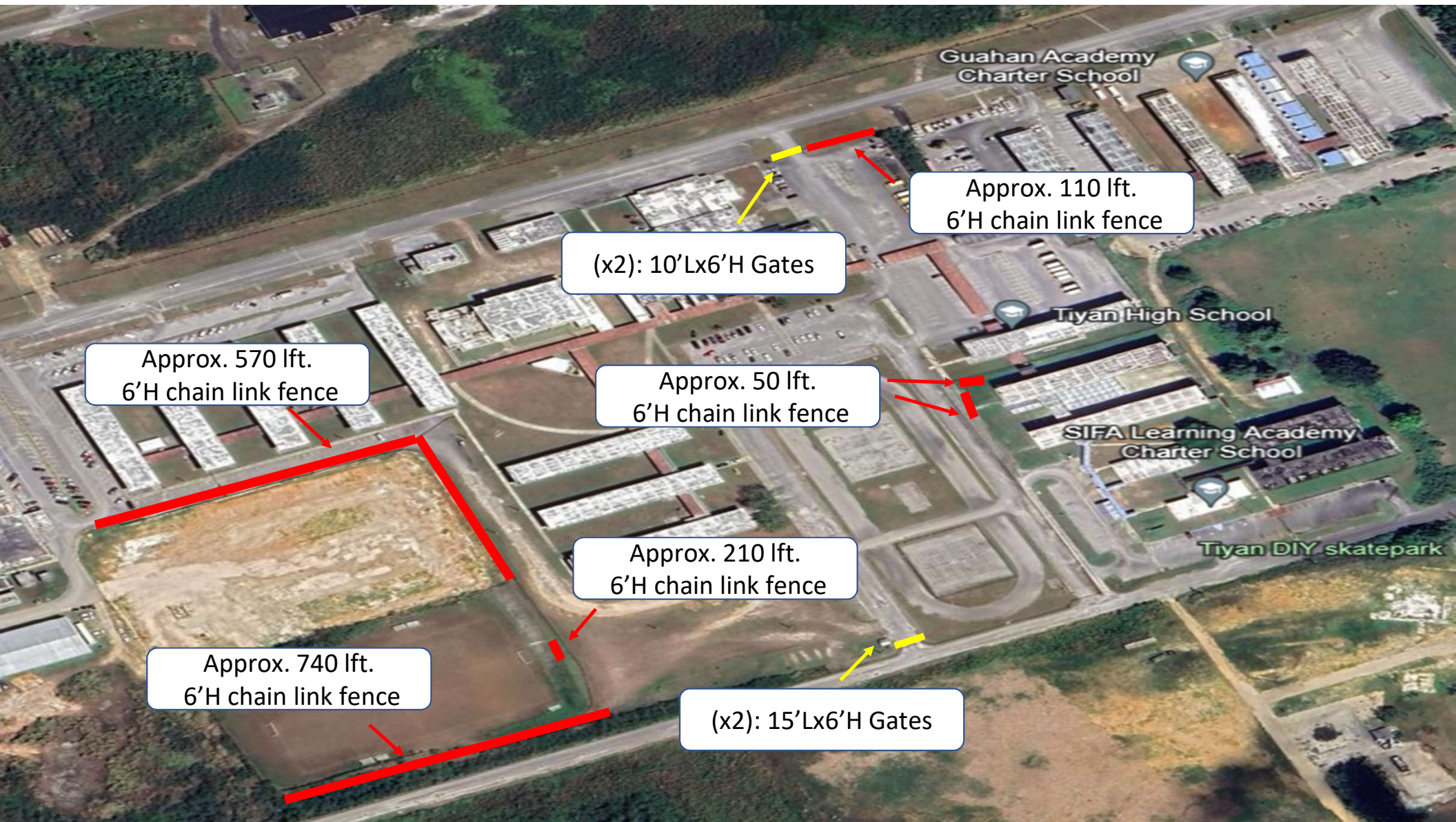
(x2): 10'Lx6'H Gates

Approx. 410 lft.  
6'H chain link fence

Approx. 220 lft.  
6'H chain link fence

Luis P. Untalan  
Middle School





Guahan Academy  
Charter School

Approx. 110 lft.  
6'H chain link fence

(x2): 10'Lx6'H Gates

Tiyan High School

Approx. 570 lft.  
6'H chain link fence

Approx. 50 lft.  
6'H chain link fence

SIFA Learning Academy  
Charter School

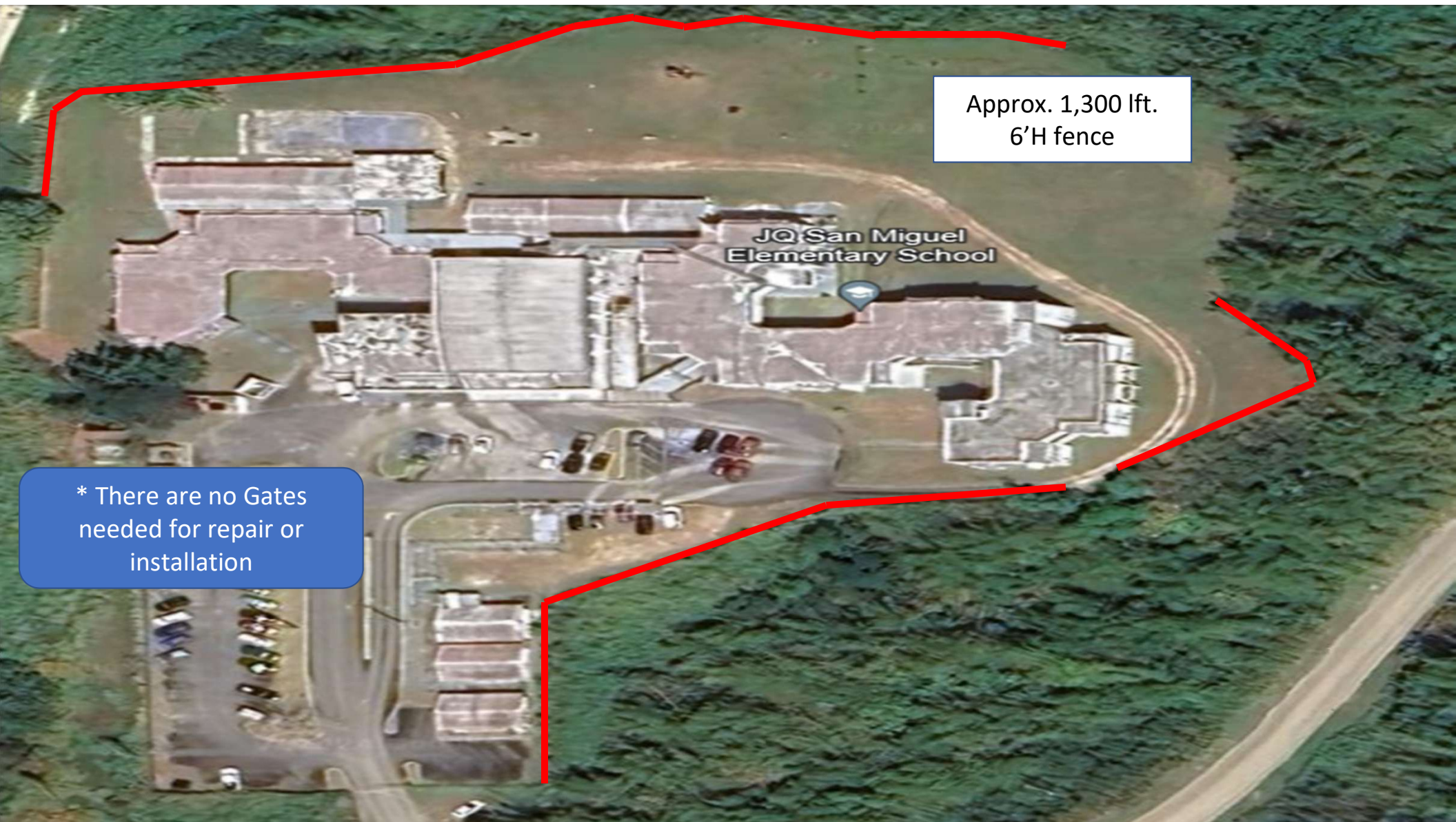
Approx. 210 lft.  
6'H chain link fence

Tiyan DIY skatepark

Approx. 740 lft.  
6'H chain link fence

(x2): 15'Lx6'H Gates





Approx. 1,300 lft.  
6'H fence

\* There are no Gates  
needed for repair or  
installation



\* There are no Gates  
needed for repair or  
installation

Approx. 180 lft.  
6'H chain link fence

Chief Brodie Memorial  
Elementary School





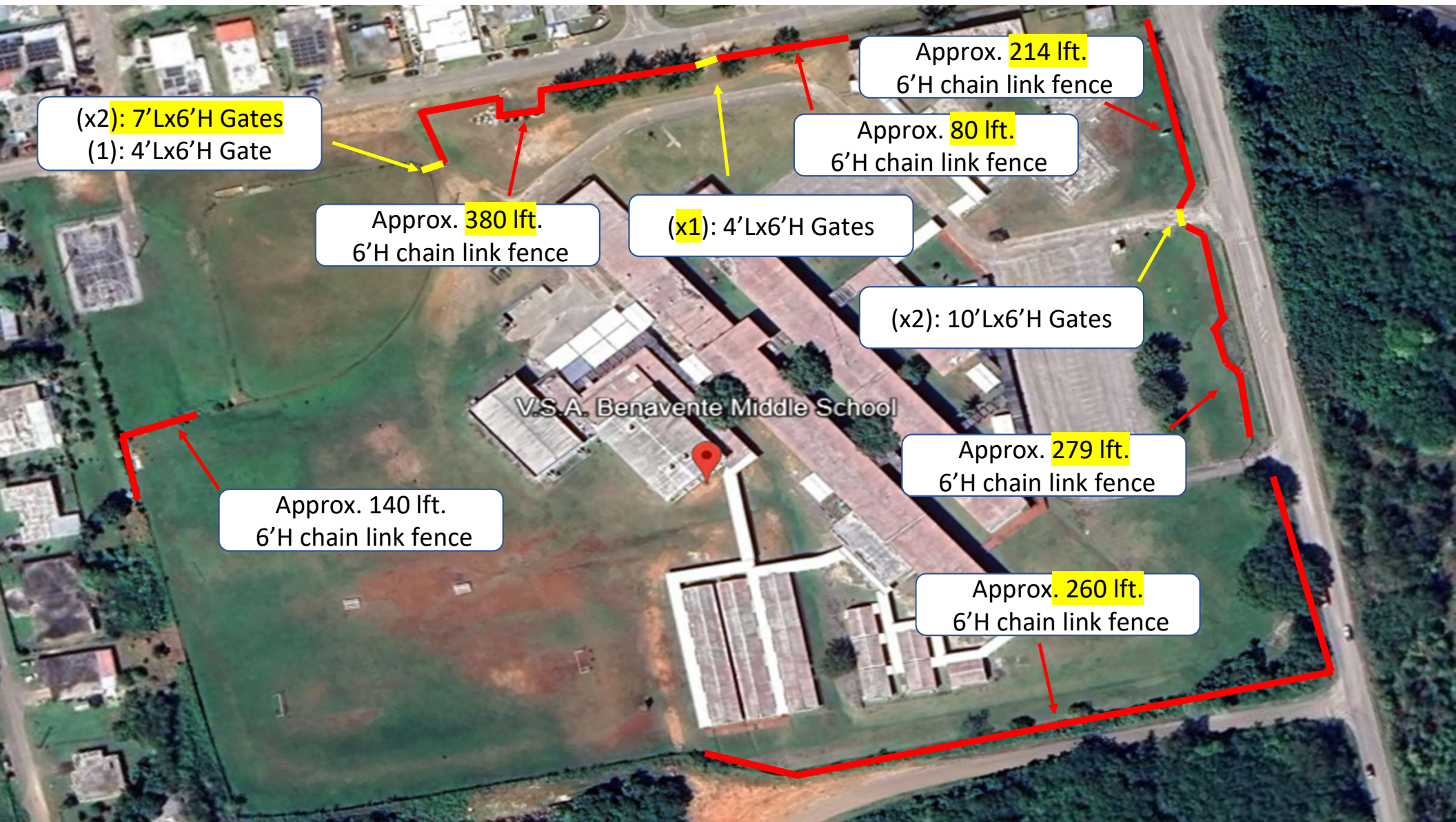




\* There are no Gates  
needed for repair or  
installation

Approx. 70 lft.  
6'H chain link fence





(x2): 7'Lx6'H Gates  
(1): 4'Lx6'H Gate

Approx. 380 lft.  
6'H chain link fence

(x1): 4'Lx6'H Gates

Approx. 80 lft.  
6'H chain link fence

Approx. 214 lft.  
6'H chain link fence

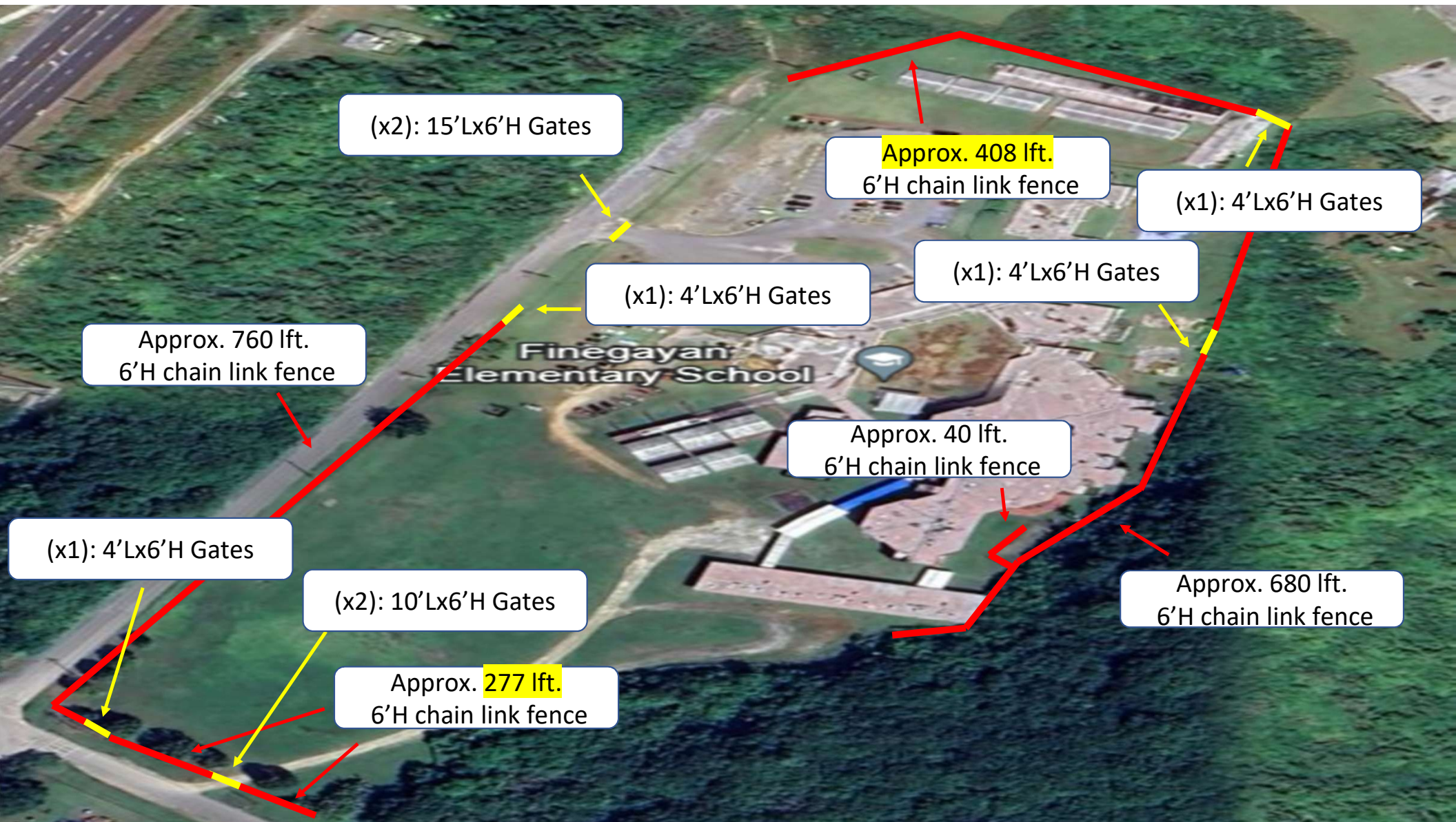
(x2): 10'Lx6'H Gates

Approx. 279 lft.  
6'H chain link fence

Approx. 140 lft.  
6'H chain link fence

Approx. 260 lft.  
6'H chain link fence





(x2): 15'Lx6'H Gates

Approx. 408 lft.  
6'H chain link fence

(x1): 4'Lx6'H Gates

(x1): 4'Lx6'H Gates

(x1): 4'Lx6'H Gates

Approx. 760 lft.  
6'H chain link fence

Approx. 40 lft.  
6'H chain link fence

(x1): 4'Lx6'H Gates

(x2): 10'Lx6'H Gates

Approx. 680 lft.  
6'H chain link fence

Approx. 277 lft.  
6'H chain link fence





Approx. 92 lft.  
6'H chain link fence

(x2): 6'Lx6'H Gates

Approx. 1,447 lft.  
6'H chain link fence



\* There are no Gates  
needed for repair or  
installation

Approx. 40 ft.  
6'H chain link fence

Liguan  
Elementary School



\* There are no Gates needed for repair or installation

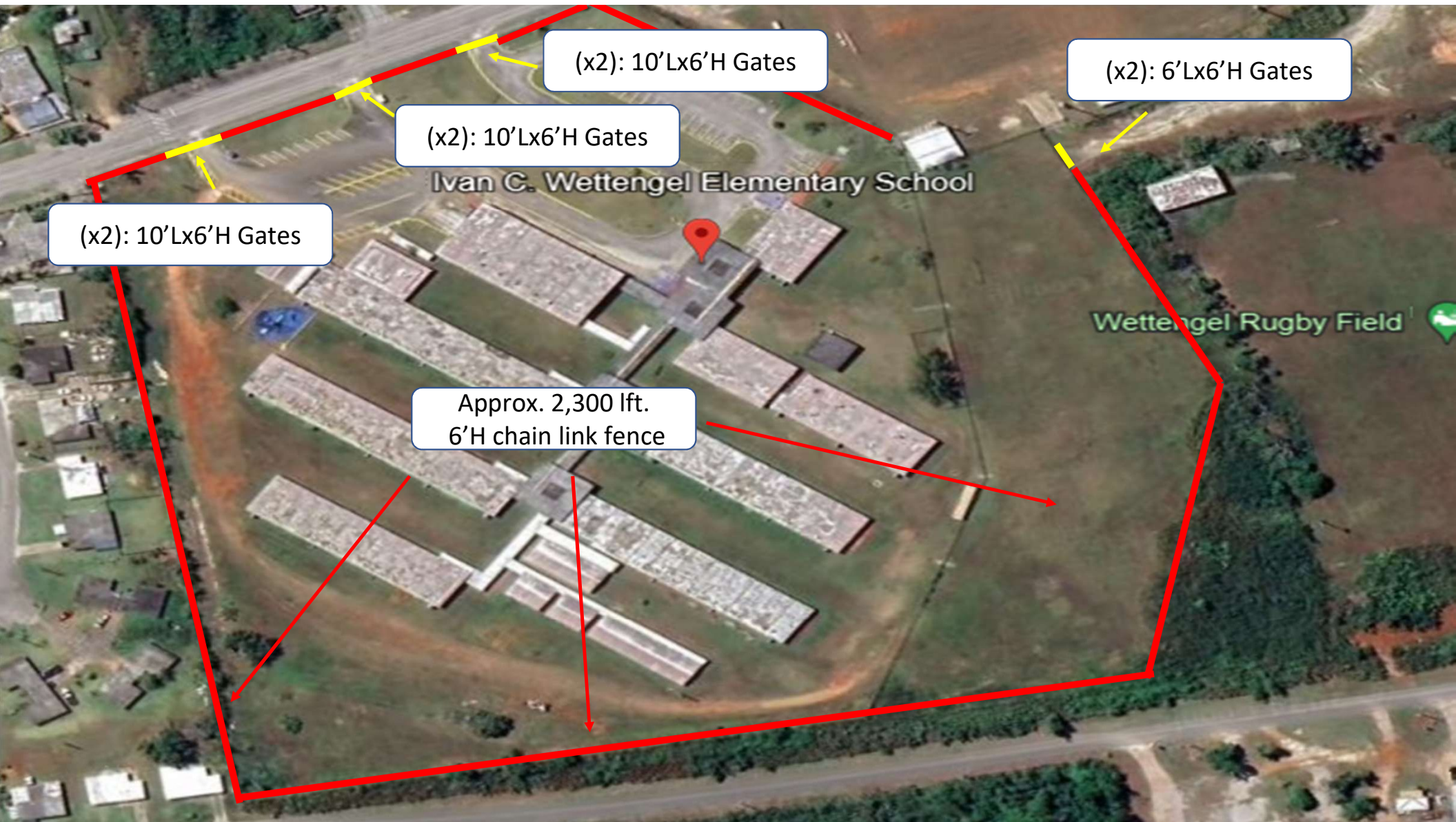
Okkodo High School

Special Olympic event Guam

Approx. 170 lft.  
30'H chain link fence

Approx. 170 lft.  
30'H chain link fence





(x2): 10'Lx6'H Gates

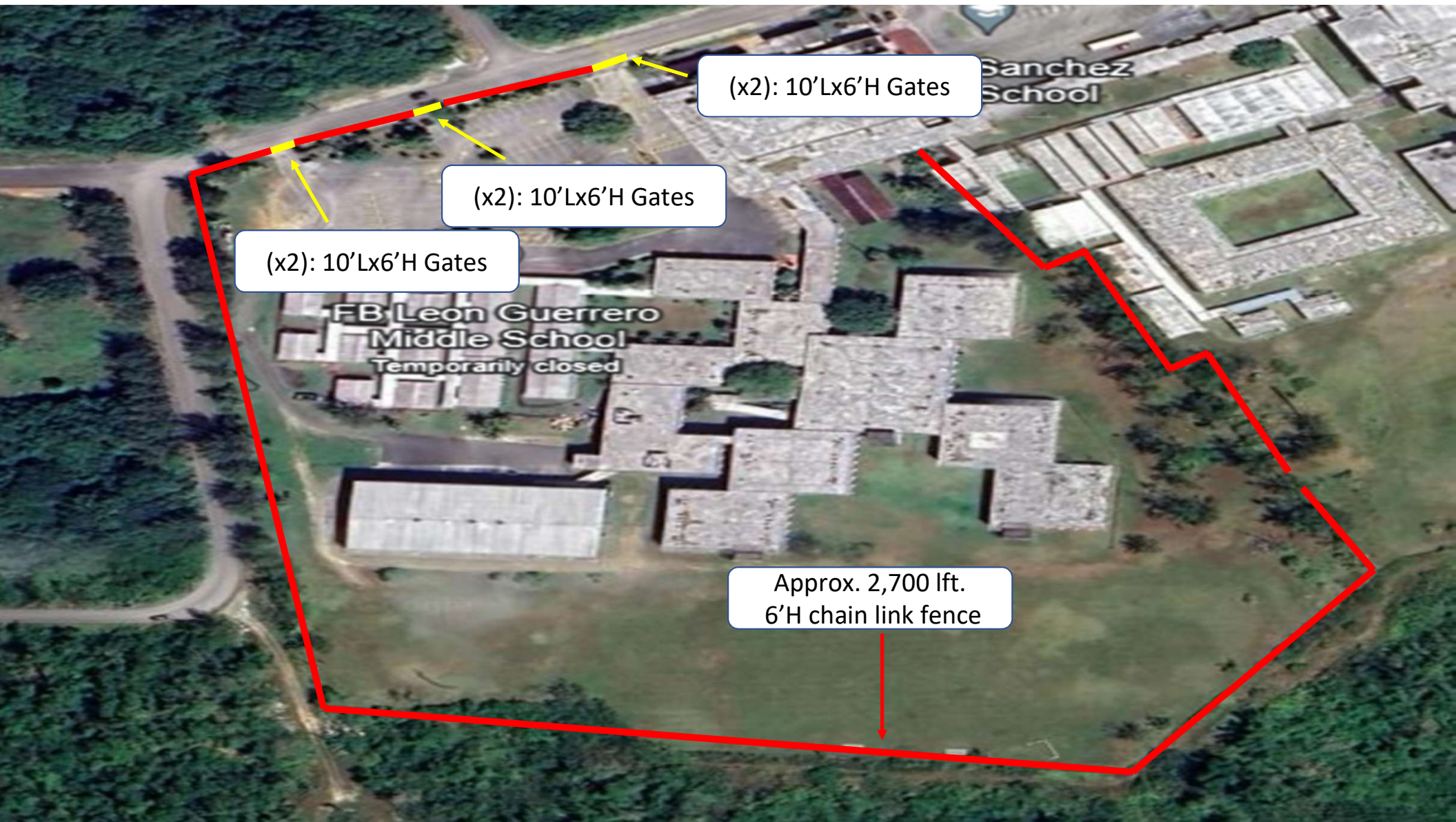
(x2): 6'Lx6'H Gates

(x2): 10'Lx6'H Gates

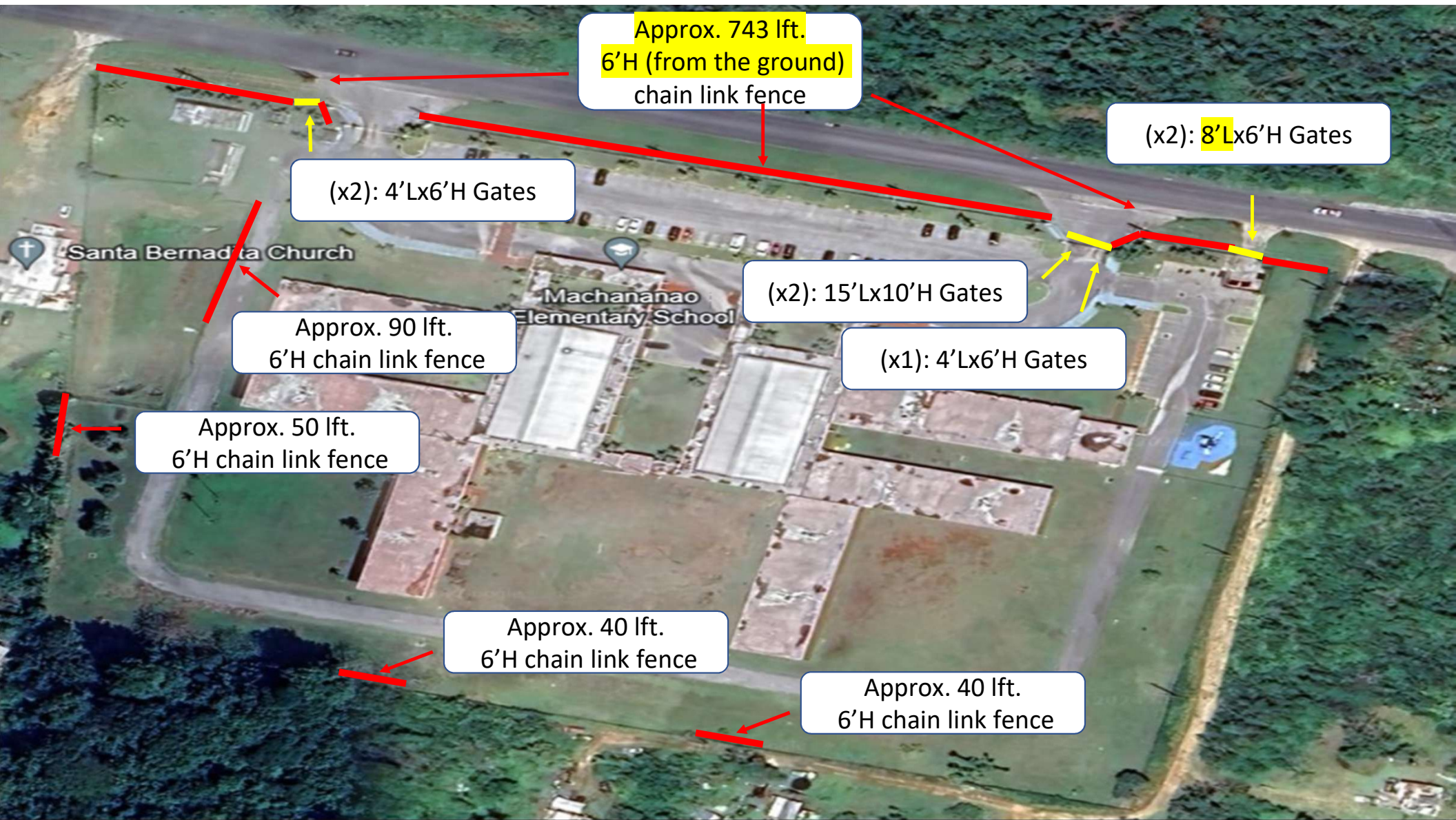
(x2): 10'Lx6'H Gates

Approx. 2,300 lft.  
6'H chain link fence









Approx. 743 lft.  
6'H (from the ground)  
chain link fence

(x2): 8'Lx6'H Gates

(x2): 4'Lx6'H Gates

(x2): 15'Lx10'H Gates

(x1): 4'Lx6'H Gates

Approx. 90 lft.  
6'H chain link fence

Approx. 50 lft.  
6'H chain link fence

Approx. 40 lft.  
6'H chain link fence

Approx. 40 lft.  
6'H chain link fence





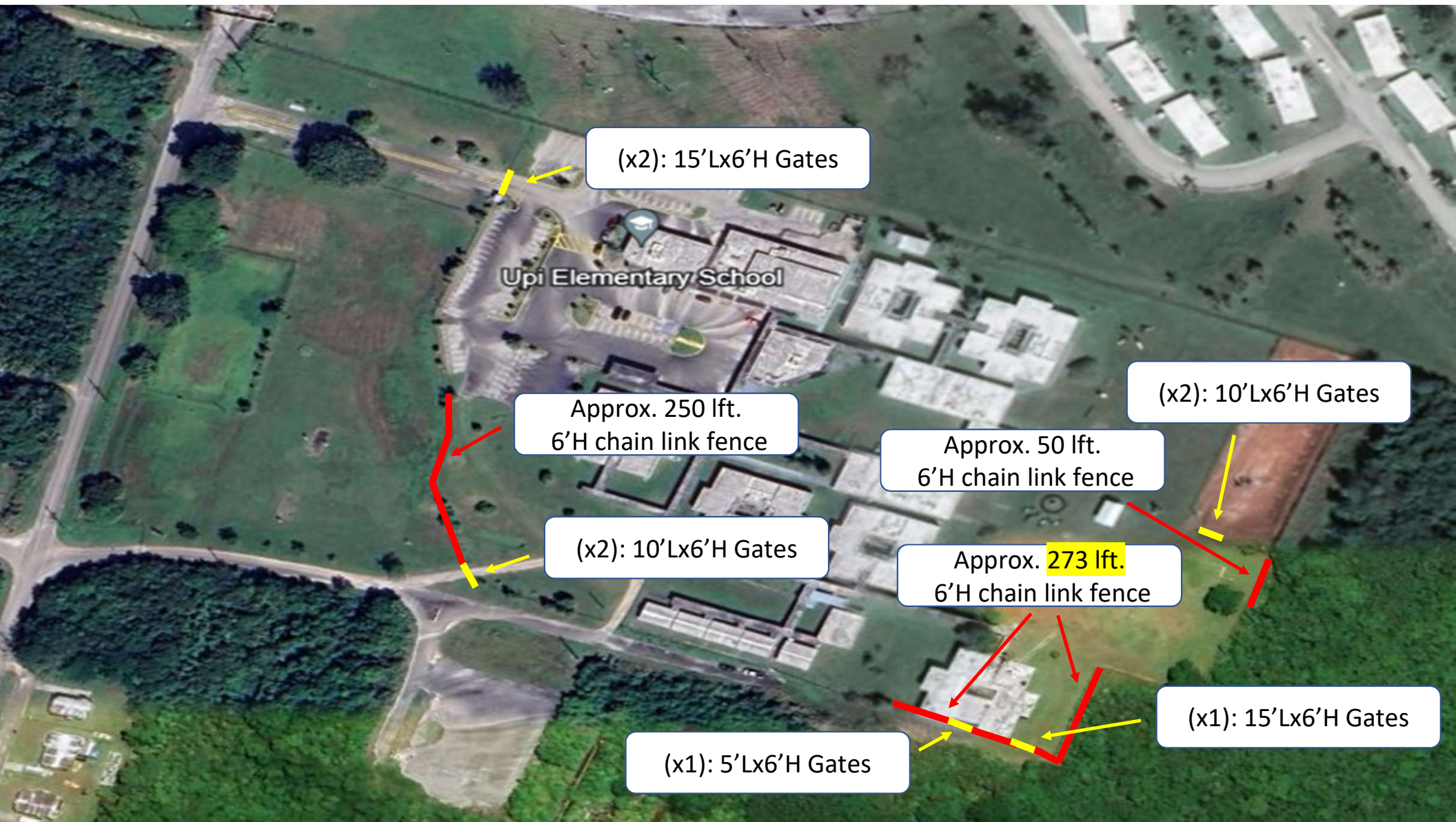
(x2): 10'Lx6'H Gates

(x2): 10'Lx6'H Gates

Approx. 1,400 lft.  
6'H chain link fence

Simon Sanchez High School





(x2): 15'Lx6'H Gates

Upi Elementary School

Approx. 250 lft.  
6'H chain link fence

(x2): 10'Lx6'H Gates

Approx. 50 lft.  
6'H chain link fence

(x2): 10'Lx6'H Gates

Approx. 273 lft.  
6'H chain link fence

(x1): 15'Lx6'H Gates

(x1): 5'Lx6'H Gates



**JOSE RIOS MIDDLE SCHOOL**

(x2): 10'Lx8'H Gates

(x2): 13'Lx8'H Gates

Approx. 360 lft.  
8'H chain link fence



\* There are no Gates needed for repair or installation

Approx. 350 ft.  
6'H chain link fence

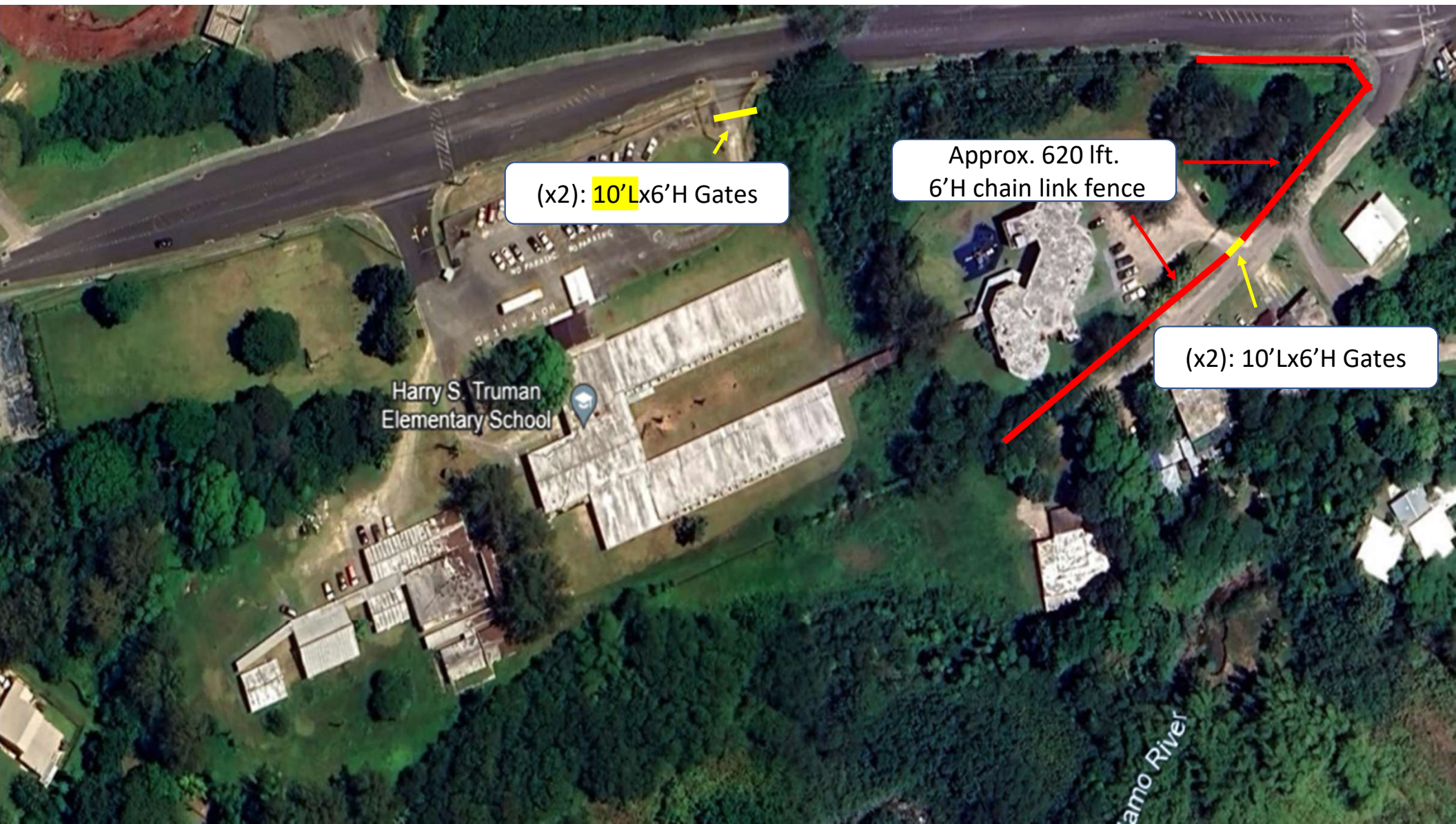
Approx. 160 ft.  
8'H chain link fence

Approx. 190 ft.  
8'H chain link fence

Southern High School

Nano River



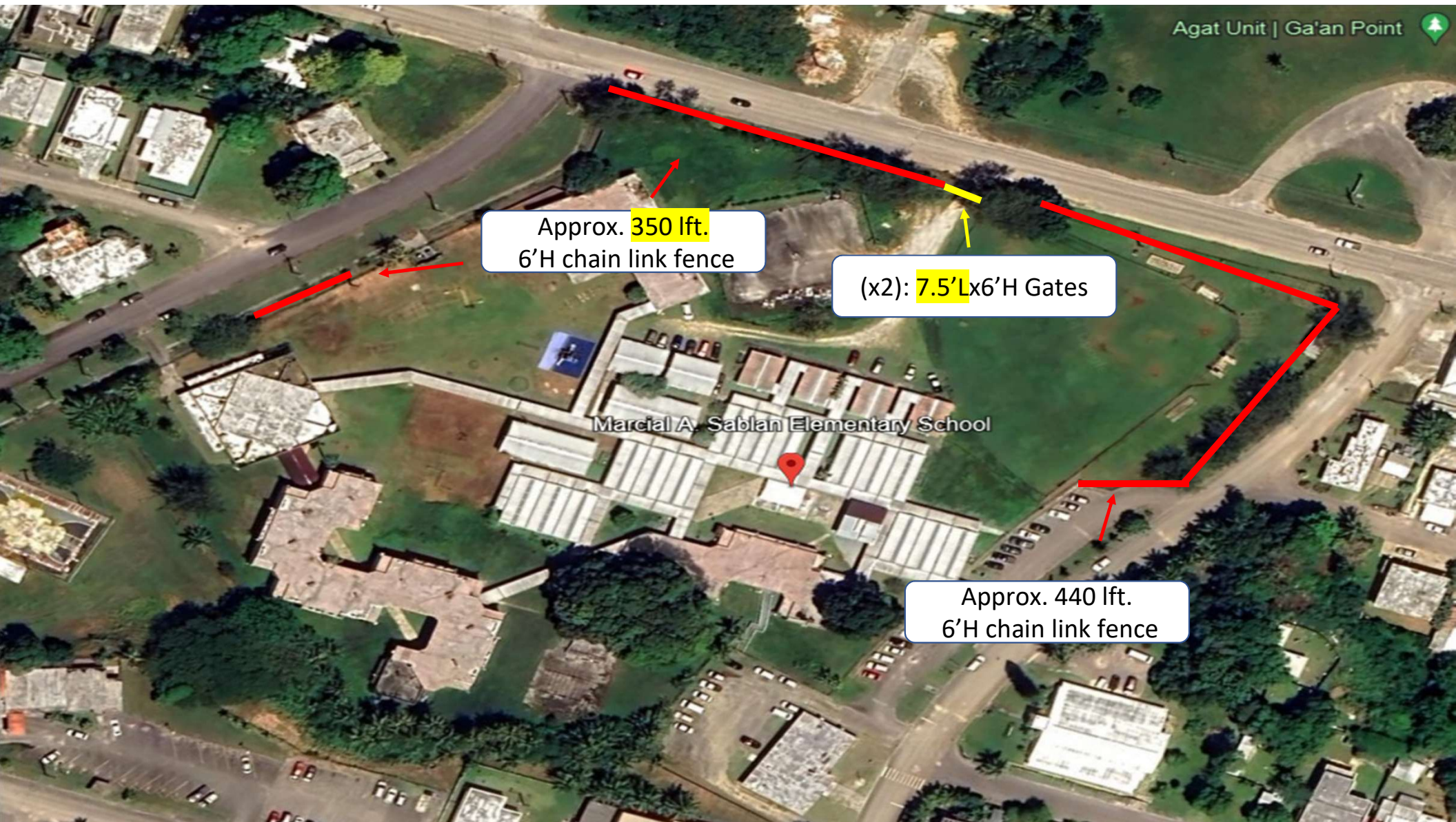


(x2): 10'Lx6'H Gates

Approx. 620 lft.  
6'H chain link fence

(x2): 10'Lx6'H Gates



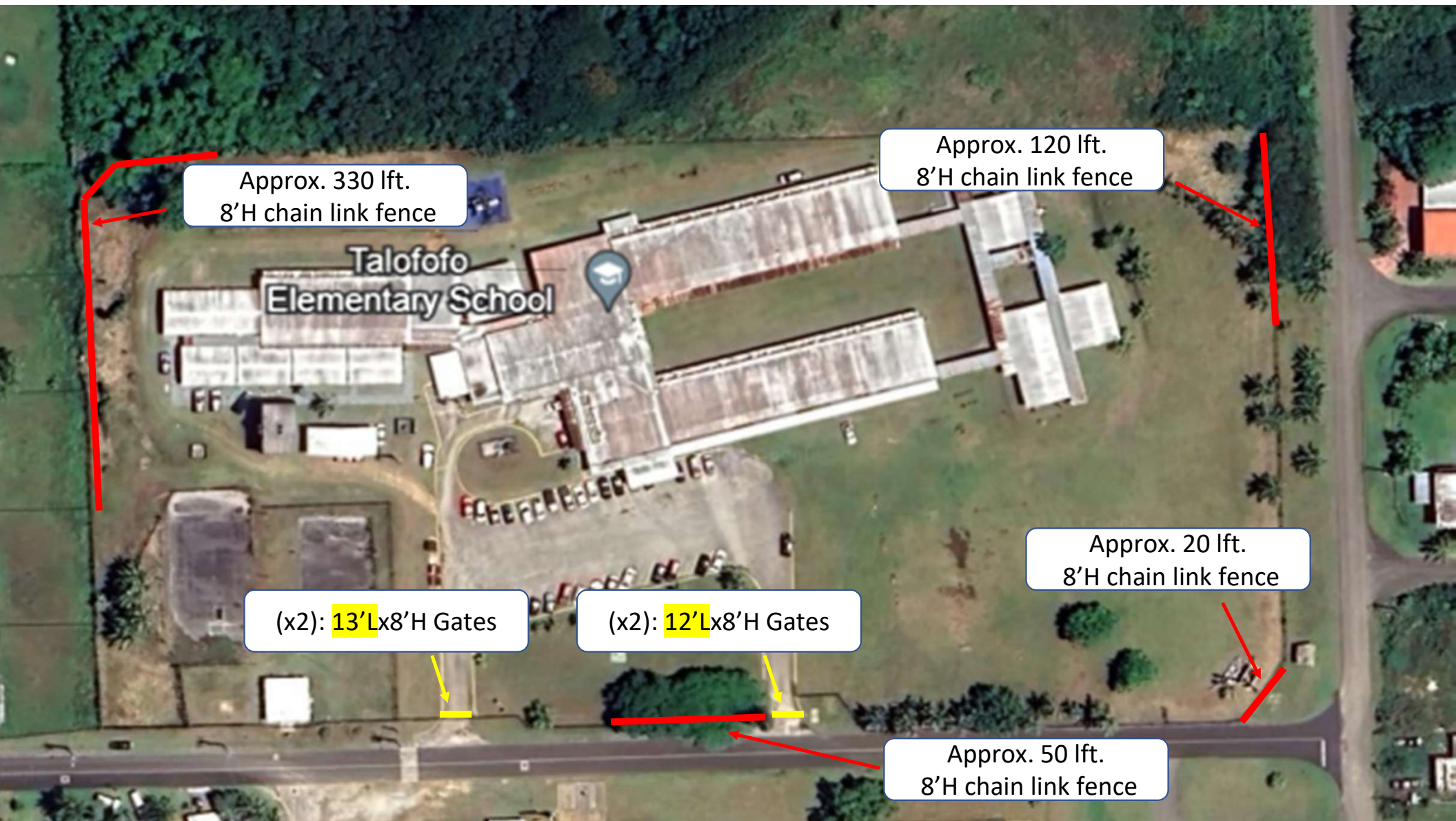


Approx. 350 lft.  
6'H chain link fence

(x2): 7.5'Lx6'H Gates

Approx. 440 lft.  
6'H chain link fence





Approx. 330 lft.  
8'H chain link fence

Approx. 120 lft.  
8'H chain link fence

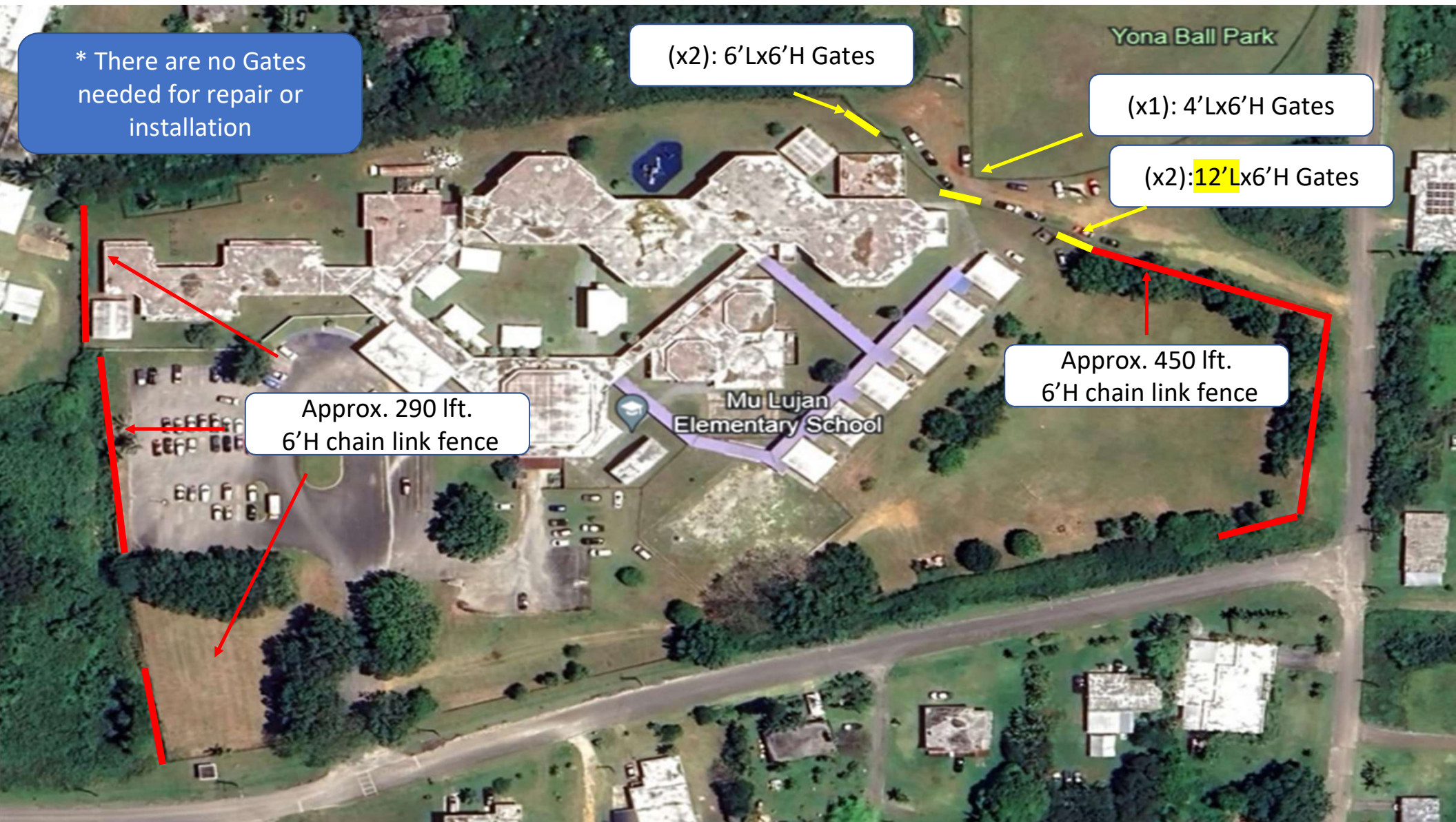
Approx. 20 lft.  
8'H chain link fence

(x2): 13'Lx8'H Gates

(x2): 12'Lx8'H Gates

Approx. 50 lft.  
8'H chain link fence





\* There are no Gates needed for repair or installation

(x2): 6'Lx6'H Gates

(x1): 4'Lx6'H Gates

(x2): 12'Lx6'H Gates

Approx. 290 lft.  
6'H chain link fence

Approx. 450 lft.  
6'H chain link fence





Approx. 230 lft.  
6'H chain link fence

(x2): 10'Lx6'H Gates

Approx. 10 lft.  
6'H chain link fence

Approx. 200 lft.  
6'H chain link fence

(x2): 11'Lx6'H Gates

(x2): 10'Lx6'H Gates

Approx. 488 lft.  
6'H chain link fence